

第37届中国（广州）国际家具博览会

第38届中国（上海）国际家具博览会



# 中国家具博览会

3月广州琶洲，9月上海虹桥



家聚世界 双城魅力



第37届中国（广州）国际家具博览会

2016年3月18-21日 / 28-31日

广交会展馆 & 保利世贸博览馆

第38届中国（上海）国际家具博览会

2016年9月7-10日

国家会展中心(上海)·虹桥

[ciff.fairwindow.com](http://ciff.fairwindow.com)

# 环球花园生活报道

global  
garden  
lifestyles  
report



2016.03

广东省户外家具行业协会会刊



未来，听你的  
The future  
is up to you

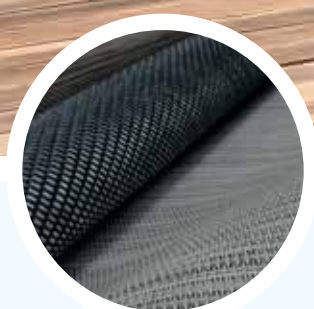




TECHNICAL TEXTILE FOR OUTDOOR



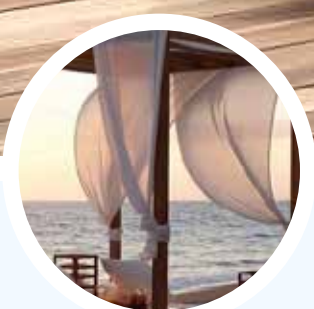
FABRIC



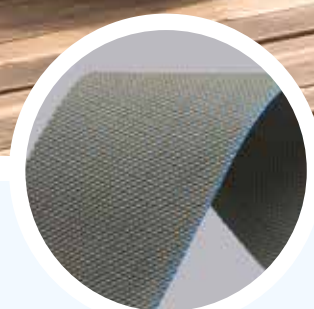
SLING



SYNTHETIC LEATHER



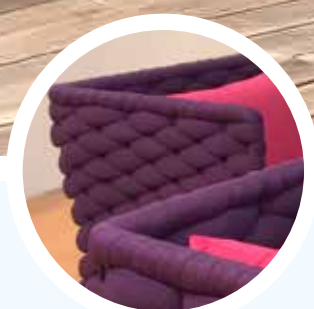
CURTAIN



WEBBING



ROPE



SOCK



RUGS



*Visit Us*

in Cologne, Germany  
4 - 6 September 2016

PT.ATEJA TRITUNGGA  
JL.Raya Batujajar KM.2.8 Bandung-40561,Indonesia  
Phone:+62 22 6866322  
Fax :+62 22 6866320  
Web :www.ateja.co.id

上海雅迈隆纺织品装饰有限公司  
地址：上海市静安区南苏州路1415号5楼  
Tel: 86-21-58340710, 50312148  
Fax: 86-21-50312276  
Email: atejashh@163.com

[www.sunproof.co.id](http://www.sunproof.co.id)





前沿产品 Leading-edge products

- 04
- 花园小“球”屋 Garden Igloo
- 04
- 月亮灯 Luna Lamp
- 05
- 现代的冥想：琳达·瓦纳科娃的奢华摇摆吊床 Modern meditation: Linda Vrnakova's luxurious Swingy hammock
- 06
- 日本建筑师隈研吾的积木设计 Tsumiki Stacking Blocks by Kengo Kuma
- 07
- pet 室内外两用家具——随时随地与爱宠共享美好时光 Deesawat Designs An Outdoor Seating Unit That Accommodates Humans And Their Pet
- 07
- “万花筒”花瓶 Op-Vase By Bilge Nur Saltik Multiplies + Reflects Flower Formations

18 相遇与合作 Meeting and Cooperation

生活方式 Lifestyles

- 40
- 莱尼克田园别墅 Farmhouse Lennik
- 42
- 日本建筑师的树屋梦，兼具惬意与诗意的户外空间 A Japanese Architect’s Dream of Tree House Outdoor Space of Pleasure and Poetry
- 44
- Pinterest的家居趋势预测 Predictions on Trends of Home Decor by Pinterest
- 46
- 让“空气凤梨”成为家居中特别的一角 New Ways to House Air Plants

协会动态 Updates of GDOFA

- 54
- 广东户外家具行业协会携手广州家博会将举办 2016 年“首届环球花园生活节” GDOFA will hold the 1st Global Garden Lifestyles Festival in 2016 along with CIFF
- 56
- 相遇与合作，户外出思想——家博会领导指导“环球花园生活节”工作 Meeting and Cooperation, Thinking with Inspiration-Guidance on “Global Garden Lifestyles Festival” from Leaders of CIFF
- 57
- 双展联动，盛事来袭，秘书长带队参加广州酒店用品展 Two Exhibitions, Great Event-Secretary General Leads a Team to Join HOSFAIR
- 58
- 广东省户外家具行业协会组织会员企业亮相上海家博会 Member Enterprises of GDOFA Show up in CIFF (Shanghai)
- 60
- 环球花园生活节“相遇与合作”思想沙龙顺利召开 The Mind Salon “Meeting and Cooperation” of GGLF is Held Successfully
- 62
- 美国高点展之行 A Visit to the American High Point Market
- 63
- 会见南北卡政商代表 Meeting with Political and Commercial Delegation from Carolinas
- 64
- 广东省户外家具行业协会召开了打假联盟会议暨副会长半年度会议 GDOFA holds Anti-counterfeiting Alliance Conference and Vice-chairman's Semiannual Conference
- 65
- 大手牵小手，爱心伴同行——记广东省户外家具行业协会赴清远捐资助学活动 Hand in Hand, Heart by Heart - GDOFA visits Qingyuan to Donate for Education
- 66
- 户外家具协会组织会员到广州市富栎华饰材有限公司参观考察 GDOFA Organized Members to Visit Guangzhou Fuyuehua Ornament Material Co., Ltd.
- 68
- 广东省户外家具行业协会荣获 2015 年度优秀商协会 GDOFA Is Awarded the Outstanding Business Association of 2015

环球花园生活报道

global garden lifestyles report

2016.03

广东省户外家具行业协会会刊

主办

广东省户外家具行业协会

编委

梁宇鹏 朱亚东 冯晓颖 程 兵  
叶兆安 曾元洪 孙国华 杨铨超  
唐剑波 吴朝臣 黄剑飞 吴袖田  
李军桥 劳志前 谢叶松 熊 锋  
樊荣生 梁志辉 陈明宗 刘建宏  
李 军 龚美华 王大万 周兆军  
张 虹 徐世民 冯伟文 关葵珍  
王 刚 蔡 滢 方庭贵 周美含  
高 巍 张伟强 孙志军 林胜皆  
谭浩敏 陈 富 陈浩良 罗浩文  
常俊召 李文军 唐 锐 许燕华  
马与冰 鱼 锋 谭金林 陈忠亮  
王品华 向邦武 张腾军 张 岩  
吴 洁 何伟球 庞宗刚 李 艳  
唐小发 邓秋合 陈国仁 沈 阁  
王建坡 周金财 刘金生 胡春黎  
李红芝 王荣飞 高正星 叶建林  
钟锦荣 单莲芬 易承志 蔡 伟  
李 敬 李华山 郭志兰 梁秀梅  
伍仲祺 郑荣华 曹 龙 刘丽飞  
齐志辉 冯伟斌 周 毛 陈健标  
傅锡煊 陈建明

编审

关 鸣 熊小玲 洪学敏 陈烨欣  
罗秀碧 梁宇鹏 冯晓颖 劳志前  
朱亚东 程 兵 何向东

地址

广州市天河区创展中心  
西座 1107—1109  
顺德办事处  
佛山市顺德区德胜东路顺德  
职业技术学院设计学院 A204

编辑 / 翻译 / 平面设计

广州绿色之春文化传播有限公司

编辑

关 鸣 赵 静

平面设计总监

廖荣辉

编辑助理

颜嘉丽 陈泽波 江嘉欣

翻译

刘继华 徐琳琪



好美佳是中国最早生产户外休闲家具企业之一，1995年创建于改革开放前沿的深圳，占地面积五万多平方米，员工500多人，产品源自欧美经典风格的设计，拥有强大的国内外设计团队，是一家集研发设计、生产、销售为一体的户外家具制造企业。

产品远销欧美40多个发达国家和地区，2011年以后由OEM到ODM实质性的转变，是欧美顶级奢侈品牌代加工的主要供应商之一；国内市场以直营、经销、代理为主；主要用于星级酒店、别墅洋房、休闲度假、豪华游艇、等工程项目；产品包括：全柚木系列、户外软体系列、外露管仿古手刷漆系列、不锈钢家具系列、平顶凉棚等。经过二十年的风雨历程，已发展成国际户外家具行业知名品牌。



Home & Garden, founded in the forefront place of reforming and opening up - Shenzhen in 1995, is one of the earliest manufacturers for outdoor furniture in China. The company covers more than 50,000 square meters and has over 500 staff. Our products are originated from the design of European and American classic style. Home & Garden, with a strong overseas and domestic R&D team, is a comprehensive manufacturing company in outdoor furniture field, from R&D to production and marketing.

Our products have been exported to over 40 developed countries and areas in Europe and America. Transformed from OEM to ODM from 2011, Home & Garden has become one of the major suppliers of outdoor furniture for European and American luxury brands. While, for domestic market, we mainly do direct sales, distribution and agency. Our products are mainly used in star hotels, villas, resorts, luxury boats and other engineering projects ect. Our product line includes full teak series, outdoor upholstery series, antique hand-painted exterior alum furniture, stainless steel series, umbrella and gazebo, ect. After 2 decades development, we have already become an international well-known brand in outdoor furniture field.



深圳市好美佳智能家居有限公司

地址 Add: 广东省深圳市龙华新区观澜街道  
茜坑新村佰公坳工业区88号

电话 Tel: 0755-27981595

传真 Fax: 0755-27991098

邮箱 E-mail: info@royalgardenchina.com





花园小“球”屋

这间花园拱形圆顶小屋可以是花园里时髦的暖房、孩子们的游乐场地，也可以是温室或者纳凉帐篷。它可折叠、可移动、结实耐用、防水防锈、100%可回收利用，花园拱形圆顶小屋全年适用，搭好它无需任何工具，两个小时即可。

Garden Igloo

Stylish conservatory, play area for children, greenhouse or gazebo. Garden Igloo is all these things. Convertible, robust and mobile. Garden Igloo is both weatherproof and rust resistant, 100% recyclable, can be used all year round and is set up without tools in two hours.



月亮灯

住在城市的你还记不记得上次抬头望向满月的时候？这盏借鉴月亮元素的灯做得十分仿真，模拟了月球表面有适当深浅变化的纹路，在黄色光照下非常温暖。材料选用玻璃纤维与乳胶漆，具有抗热、防水的功能。尺寸从3.2-23.6英尺（约8-60厘米）共七种，迷你版的灯靠电池供电，其它均为插电。月亮灯的售价为65美元起，最初在众筹网站推出，来自台湾橡果艺术工作室Acom。

Luna Lamp

Living in the city, do you still remember the last time that you looked up and saw the full moon? This vivid lamp, taking the moon for reference, simulates the various highlands and maria on the surface of the moon and gives out warm yellowish light. The fiberglass and latex chosen as its materials feature heat-resistance and waterproofness. The lamp has altogether 7 different sizes which vary from 3.2 to 23.6 feet (about 8 to 60 centimeters) with the mini lunar lamp battery-powered and others plug-in and its lowest price is 65 US dollars. The lunar lamp was initiated on a crowd funding website by the Acom Studio in Taiwan.



现代的冥想：琳达·瓦纳科娃的奢华摇摆吊床

LIV Design的捷克设计师琳达·瓦纳科娃（Linda Vrnakova）设计了摇摆吊床系列，将吊床上升到了休闲、奢侈的高度。琳达在坐落于拉贝河畔乌斯季（Ústí nad Labem）的浦肯野大学（University of J.E. Purkyně）攻读纺织与时装设计硕士，明年她将完成在这里的六年学业，而被子般的毛绒料摇摆吊床是她最后一个学期的项目。最近，这些吊床在布拉格举行的2015年Designblok中展出。

摇摆吊床由厚厚的棉绳和山毛榉木做的横木组成，悬在空中，外观令人惊奇，这要归功于来自Kirby Design的质地优良的棉和帆布，以及一个个合格的按摩小球，这些小球曾用于捷克一种有效的物理疗法，而吊床的织物则体现了这一疗法。（瓦纳科娃说：“我一直在想如何把它们运用到我的纺织设计领域当中来。”）

这些吊床可在室内室外反复使用，风格独特，纯手工打造，且有由捷克皮革店的废弃皮料制成的装饰。

“我创作摇摆吊床系列，是因为我意识到自己缺乏休息，应当学着冥想，”瓦纳科娃说，“塑造你的想象力，在温柔的摇摆中得到放松，有益身心。”

Modern meditation: Linda Vrnakova's luxurious Swingy hammock

Czech designer Linda Vrnakova of LIV Design has elevated the hammock seat to a new level of laid-back luxury with her Swingy seat collection. Presented at Prague's recent 2015 Designblok, the plush quilt-like swinging seats began as a final semester project during her master's program in textile and fashion design at the University of J.E. Purkyně in Ústí nad Labem, where Vrnakova will complete her six-years of study next year.

Suspended by a system of thick cotton ropes and beech wood beams, the seats owe their striking appearance to high-quality fabrics in cotton and canvas from Kirby Design, and a series of certified massage balls used for a successful Czech physiotherapy method that have been incorporated into the fabric. ('I was wondering how to use them in my field of textile design,' says Vrnakova.)

Designed in both indoor and outdoor iterations, the stylish seats are handmade and feature leather detailing made from waste materials from Czech leather shops.

'I created Swingy because of my own sense of lack of rest and the need to learn to meditate,' says Vrnakova. 'To let your imagination form and to relax in the gentle swaying that has such a positive effect on mind and body.'





日本建筑师隈研吾的积木设计

对于富有创造力的人来说，这些木块可以发挥出他们无穷无尽的想象力。您会创造出什么呢？每个建筑师都会告诉您：从结构上来说，三角形是最稳固的几何图形。建筑师隈研吾正是把这一原理植入到一套极具趣味性和互动性的室内装饰积木。

每块积木都触感光滑，由宫崎县出产的柳杉制成，尺寸约为4×4。每块积木的末端都刻有精巧的V字形凹口，因而可以安放在另一块积木的顶部，就像日本航空公司过去给那些无法安坐的孩子准备的剪纸工具。隈研吾的积木对年轻人和老年人来说都极具吸引力，能给各个年龄阶层的人都带来富有创造力的种种可能。

对于喜欢钻研的学步儿童来说，这些积木是他们的理想选择。有了隈研吾积木，孩子们就不再由普通、老旧的乐高积木陪伴成长了，而是用这些积木创造出各种迷你建筑，甚至还能搭出很多小动物。一些有想法的年轻人又想出了一些适用隈研吾积木的构造，比如植床的构架，鸟舍的屋顶。

如果放到到更大的场地，这些积木可以分散开来，也可以堆叠起来，还可以做成巨大的金字塔或者梦幻般逐渐变小的三角长廊。这样的公共装置最近在2015年的Design Touch上展出，隈研吾解释了该作品的意义，他说公园的游客将这些积木做成类似家具的构造，让公园变得像家一样，愈发舒适惬意。

现在这些积木已经开始在网上出售，售价70美元一套。您可以根据自己所需的积木数量订购三种不同的尺寸。

Tsumiki Stacking Blocks by Kengo Kuma

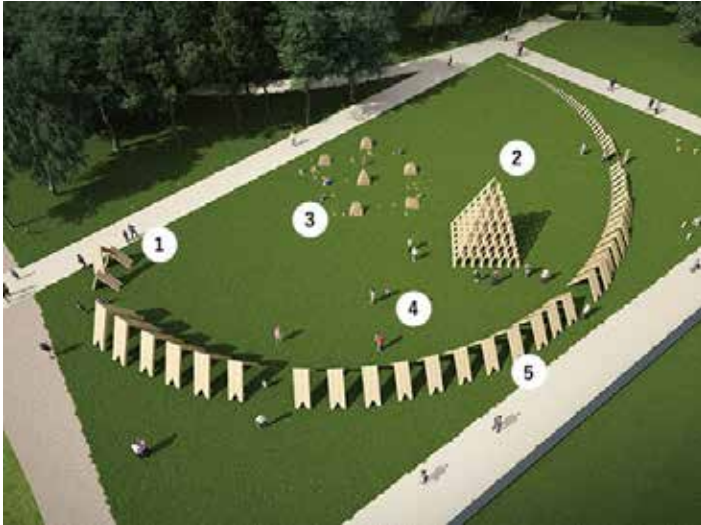
These stackable wooden pieces offer limitless potential for the creative mind. What will you create?Any architect will tell you that, structurally, a triangle is the strongest geometric shape. Architect Kengo Kuma has taken this knowledge and rendered it into a playful and interactive interior design building set.

Satisfyingly smooth to the touch, each piece is crafted with Japanese cedar from Miyazaki Prefecture and measures about 4 " by 4 ". Nifty notches cut into the tips of each block allow each to nestle atop the other, like those paper cut-out kits that the Japanese airlines used to offer to kids who couldn't sit still. Kuma's stacking blocks hold great appeal for both young and old, offering a range of creative possibilities to the user no matter their age.

They make great building blocks for the inquisitive toddler. Instead of growing up with the plain old lego set, a child can fabricate miniature structures and even animals with these wooden blocks. A few young creatives reimagined Kuma's blocks including ideas as the framework for plant beds and the roofs of birdhouses.

Blown up to a greater scale, these blocks can be scattered, stacked, and organized to create a giant pyramid, or a Wonderlandian receding hallway of triangles. Such a the public installation was recently on display at Design Touch 2015. Kuma explained the significance of this work, saying that as park visitors arranged the blocks into furniture-like structures, the park becomes more and more welcoming, like home.

These building blocks are available online for \$70 a pop. You can order three different sizes depending on how many blocks you want.



pet室内两用家具

——随时随地与爱宠共享美好时光

通常情况下，人们都会将宠物生活与室内生活分开考虑，为消除这两个领域间的鸿沟，泰国品牌deesawat近日推出了一款名为“pet”的可移动家具单元，供人们与自己的爱宠共同分享。随着现代生活的发展，宠物已经逐渐成为家庭中的中心成员，这也使得这款产品更容易得到宠物爱好者的青睐。这款家具包含了一个供主人就坐的区域和供宠物休息的小隔间，小隔间可以根据使用者要求任意移动。家具框架由柚木制成，搭配耐用的织物面料及靠垫，这样一来，这款家具不仅可以在室内使用，还可以移至室外当做户外家具。（本文转载自@designboom）

\* 所有图片均由deesawat提供

Deesawat Designs An Outdoor Seating Unit That Accommodates Humans And Their Pet

pet living and interior living are usually considered as two separate scenes, deesawat aims to bridge the gap between these fields, with 'pet' – a movable unit that both human and animal can share together. this piece of furniture contains a seating area for humans and a small compartment for the pet to rest in, which can be moved to suit one's desired preference. the structure is made from teakwood and is covered in durable fabrics and seating cushions, meaning the design can be used outdoors as well as indoors. (@ designboom)

\* all images courtesy of deesawat



“万花筒”花瓶

来自于土耳其的设计师bilge nur saltik的作品 OP 系列花瓶。设计师想要通过外部玻璃罩的扭转将一朵花呈现出花束的视觉效果，利用万花筒原理的放大效果，从每个角度看都会有不同的视觉感受，从一朵花变幻出千万朵。每个玻璃外罩都是手工吹制，全系列有三种尺寸，并且各自有不同颜色和切口设计，组合起来也是一道缤纷风景。

这套系列花瓶有三种不同的尺寸，每个玻璃外罩都由手工吹制而成，并且各自有着不同的切口图案设计，做工非常精细，打造出了一种理想的光影效果。蓝色与绿色的花瓶外罩不仅有放大花朵的效果，而且还为花朵本身增添了颜色。（本文转载自@designboom）

\* 图片由bilge nur saltik提供

Op-Vase By Bilge Nur Saltik Multiplies + Reflects Flower Formations

'OP-vase' is a series of vessels conceived by turkish designer bilge nur saltik, presented at ventura lambrate during milan design week 2015. the capsules seek to create the impression of a bouquet with only a single flower through visual distortions, multiplying colorful petals throughout the spherical space. the glass shield's kaleidoscopic properties have a magnifying effect, creating the impression of numerous abstracted botanicals.

the collection is composed of three vases in different sizes, each with their own unique pattern of cuts made from thick, hand blown glass, and formed with exacting precision to create the desired optics. tinted in blue and green, the shields not only augment the image of the flower, but add a subtle colored hue in addition to their own. as the viewer changes their orientation relative to the vase, the single flower's form dissolves into a bouquet while maintaining a single, congruous form. (@designboom)

\* image courtesy of bilge nur saltik





**GREEZU 贵竹**

江西省贵竹发展有限公司成立于1998年,总部座落于中国十大竹乡之一的江西崇义,专注于竹家具竹地板,竹装饰面板,竹户外材料订制等20多个系列品种的研发,生产和销售。总公司下设贵竹赣州分公司、广州分公司、园艺公司、房地产开发有限公司、贵竹超市等。公司注册资本3000万元,资产额为2亿元,现有员工300余人。“贵竹”品牌被认定为江西省著名商标,产品率先通过ISO9001质量管理体系认证、ISO14001环境管理体系认证、欧洲CE认证、FSC森林体系认证,先后8次在国际、国内建筑装饰博览会和竹业博览会上荣获“优秀产品奖”“金奖”等殊荣。



- ◆ We are located in the MOSO Bamboo forests country——Chongyi, Jiangxi province, China.
- ◆ We, established in 1998, only have one mission——to research and produce bamboo products. Up to now, we have set up two factories, occupied 52000 square meters and hired more than 400 employees.
- ◆ Over the past 15 years, we have gotten many certificates ——ISO9001、ISO14001、CE、FSC…… and we also built famous brand-GREEZU in the world.
- ◆ It is necessary to emphasize the equipment we used is HOMAG, the top class precision machine used in the bamboo product line.
- ◆ We not only manufacturing bamboo flooring, but also providing bamboo decking, bamboo indoor furnitures, bamboo outdoor furnitures, bamboo interior materials... Have you heard who better understand the bamboo than us?
- ◆ We are Greezu——the bamboo value deliverer.



佛山市顺德区美雅鑫家具实业有限公司

地址：广东省佛山市顺德区北滘镇高村工业区3路1号  
 联系人：熊锋  
 电话：0757-22398656  
 传真：0757-22398562  
 邮箱：echo@meiyaxin.com



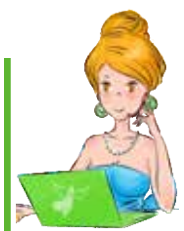


《爱优活》品牌来自宝岛台湾，取其“爱上台湾优质生活”的涵意。许多人向往台湾高水平的生活质量，我们相信透过台湾优质产品一点一滴地渗透，生活会变得更幸福美好。

我们集团从抽纱、纺线、织布、印染、裁剪、成品设计制造到销售是一条龙的服务，客户大至全球最大的沃尔玛采购集团、欧洲百年品牌制造商、小至中国各乡镇的消费者...都是我们涵括的范围；也正因为我们被纳入全球顶尖采购集团的体系，所以今天我们才得以用质优价廉的商品，服务给追求优质生活的您！



*In The Garden*



联系电话：  
400-662-4846  
www.aiuho.com

天猫：<https://aiuho.tmall.com/>  
京东：<http://aiuho.jd.com>  
台湾优品店：<https://aiuho88.jiyoujia.com/>  
广州市南沙区广兴路46号  
广州晴晴家具贸易有限公司



微信



新浪微博



— 御藤赏·愈心赏 —

两用健康休闲家具领导品牌

## 雅藤定制 定制未来

YATN Tailored Custom-made Future

家居已经进入定制时代，定制雅藤家具紧跟潮流生活！

Furniture's entered the era of customization, YATN furniture custom-made follow the Fashion!



佛山市顺德区雅藤家具制造有限公司 FOSHAN SHUNDE YATN FURNITURE CO.,LTD

地址：佛山市顺德区勒流镇龙眼工业区龙升十路4号  
ADD: No.4, LongSheng 10 Road LongYan Industrial Area, LeLiu, ShunDe District, FoShan City  
电话 Tel: 0757-23660868 / 23660879 / 23660871 传真 Fax: 0757-23660877 / 23660878  
官网: [www.yutengjiang.com](http://www.yutengjiang.com) <http://yateng.en.alibaba.com>





# WinTech®

户外家具协会 / 副会长单位



WinTech® 环保塑料藤是由复合环保材料精制而成的仿自然藤，具有优越的耐候性、延展性、防尘抗菌及易保养等特性，同时在色泽及纹路上也能表现出更丰富多变的样貌。 本公司所有原材料、色粉、添加剂等均由国外进口，产品通过欧美地区如 SGS 及 TUV 等最新国际标准认证。WinTech® 环保塑料藤提供多种客制化规格及款式，能灵活应用于高级户内外家具及各式家用编藤类装饰品。

WinTech® wicker are synthetic wickers with features of excellent weather resistance, great tensile strength, pest and fungus-free, easy maintenance, and more diversified appearance. Our products are made of imported non-toxic and recyclable materials and certified by major international laboratories such as SGS and TUV. With state of the art design and technique, WinTech® wickers provide various customized patterns and specifications to be applied to high-end indoor and outdoor furniture and household woven accessories.

**东莞荣泰塑化材料有限公司**

地址：广东东莞市茶山镇茶山工业园 E 区  
企业对外电话：0769-38893881

[www.win-tech.cn](http://www.win-tech.cn)

## 悍高 HIGOLD®

股权代码:660542



Higold Outdoor Furniture Company, one of the core members of Higold Group, was established in 2005. We are providing both original-designed and hot-selling outdoor collections. We are working with several world-wide well-known brands and our customers come from all over the world. We aim at creating an international excellent outdoor brand. Rather than just a simple supply and demand company, Our ideology is to provide a better and elegant lifestyle with our products. With our unique and innovative product designs, our outdoor furniture gives our customers a better reason to stay outdoors. Shenzhen X, one of the patent collections achieved Reddot and Redstar prize 2014 in Germany and China.

悍高户外家具公司成立于2005年，是悍高集团的核心成员。涉及产品主要为原创藤艺和户外家具系列、热销编藤等户外休闲系列。客户覆盖海内外，目前与全球多家知名品牌客户在合作中。悍高户外家具公司立志打造世界级的户外家居国际品牌。我们销售的不是简单的产品与服务，我们提供的是“人们的生活理想”，通过符合人们美好生活愿景的户外家居用品设计，与一流的服务，让人们享受着阳光与健康的幸福生活，是我们一直追求的使命。所设计原创经典产品-返回舱在2014年获得德国红点奖和红星设计奖。

中国广东佛山市顺德区杏坛镇杏龙路21号 邮编 528325  
21 XingLong Road, Xing Tan Town, ShunDe, FoShan City,  
GuangDong Province, China. 528325

T +400 0189 990  
T +86 757 2738 6382  
F +86 757 2738 6278  
E +info-china@higold.com.cn  
W +www.higold-furniture.com.cn www.higold.com.cn



德国红点设计大奖得主  
reddot design award  
winner

红星奖  
设计大奖  
Red Star Award  
winner





## 惠州檀悦豪生酒店

Howard Johnson Resorts & Spa Huizhou



美之滕家具  
MT FURNITURE

Web: www.m-tanyt.cn

Tel: 0760-86516788

Email: info@m-tan.cn

### 企业简介 About MT

中山市美之滕家具有限公司是一家集生产、加工、经销、批发的户外家具公司，PE藤家具、藤家具是公司的主营产品。公司成立于2005年，是户外家具行业里的专家。

MT Furniture Co., Ltd. is located in Zhongshan City in Guangdong Province. It is a rapidly growing enterprise in the outdoor furniture industry, specialized in R&D, manufacturing and marketing of rattan furniture and products. The company was founded in 2005 and now has been a leading brand in outdoor furniture industry.



26年品质经验



Where your designs come to life...  
这里让你的设计走进生活...

1990年，创建佛山顺德华通户外家具有限公司，成为国内最早生产户外休闲家具的制造公司。

1999年，成立佛山华通花园家具有限公司。

2003年，成立佛山华通家具有限公司。

同年，公司建立国内销售部，专注中国市场，将户外家具的休闲概念带到中国。公司目前是中国家具协会会员及广东省家具协会会员。公司具备全套的管理、生产、设计、技术工艺，及拥有完整的质检、售后服务、市场营销团队。产品畅销欧美、澳洲、中东和中国等多个国家和地区。

2004年，公司注册“君·伯爵”品牌，其目标是成为欣赏生活的品位人士最贴心的家具设计师，满足他们对生活品位的享受。产品凭借独到的设计理念、优良的品质，深受国内市场有品位人士的欢迎。

2015年，已走过26年的我们，让我们以一贯的高品质服务意识服务于高品质的客户。请加入到“君伯爵”品牌吧！

In 1990, Foshan Shunde Huatong Outdoor Furniture Ltd. was established, which was the first manufacturer of outdoor casual furniture in domestic China.

In 1999, Foshan Shunde Huatong Garden Furniture Ltd. was set up.

In 2003, Foshan Shunde Huatong Furniture was established.

In 2003, Domestic Sales Department was founded, focusing on the Chinese market, bringing outdoor leisure concept into China. Our company is one of the members of China Furniture Association and Guangdong Furniture Association. Our company has a complete set of management, production, R&D, production technique, quality inspection, after-sales service and marketing team. Our products are popular in many countries and regions of Europe, America, Australia, Mid-East and China.

In 2004, the Kingbird brand was registered, aiming to become a most intimate furniture designer for decent persons who know how to enjoy life, trying to satisfy their need to enjoy the life. With unique design concepts and excellent quality, our products have met with great favor home and abroad.

In 2015, we have gone through 26 years, high quality as the core principle, we are committed to provide high-quality customers with high-quality products and services. Please join the Kingbird brand!



### “君伯爵”三大金刚：

铁、铝、不锈钢

Three Kingkong  
of Kingbird :  
iron,  
aluminium,  
stainless steel



Http://www.huatong.com

E-mail: hua-tong@hua-tong.cn

佛山市顺德华通花园家具有限公司  
FOSHAN SHUNDE HUATONG GARDEN FURNITURE LTD.

地址：广东省佛山市顺德区陈村镇105国道南涌香露

电话：(86-757)2332 9021 2381 3043 2381 3099

内销：13802646163(梁小姐) 13802647863(陈先生)

传真：(86-757)2332 9021 邮编：528313

邮箱：hua-tong@hua-tong.cn

网址：www.huatong.com www.君伯爵.cn www.君伯爵.com

Add: Yunxiangwei, Nanyong, 105 Country Route, Chencun,

Shunde, Foshan, Guangdong, China

Tel: (86-757)2332 9021 2381 3043 2381 3099

International Sales: linna@huatong.com

Fax: (86-757)2332 9021 P.C: 528313

E-mail: hua-tong@hua-tong.cn

http://www.huatong.com www.君伯爵.cn www.君伯爵.com



*Yunge*  
云格藤椅

它不只是一件户外家具，

It is more like the artistic ornament

更是一件艺术装饰品

than the outdoor furniture



中山市云格金属家具有限公司  
YUNGE METAL FURNITURE CO.,LTD

厂址：中国广东省中山市港口镇石特社区福田七路2号

Add: No.2 Futian 7 Road, Shite Community Gangkou  
Town, Zhongshan City, Guangdong Province, China

电话 Tel: 0086-760-88518118

传真 Fax: 0086-760-86713383

网址 Http: //www.yunge-co.com 邮箱 E-mail: yunge@cany-f.com

Area D of CIFF, Pazhou, Guangzhou, Booth NO.  
广州家博会 D 区 展位号: 18.1 B05

*Artie* 亚帝

for a better life

随享·度假心情



Artie Garden International Ltd.  
广州亚帝实业有限公司

www.artiegarden.com

地址：广州市番禺石基南浦南荔西路15号

Add: 15, Nan Li Xi Road, Nan Pu, Shi Qi, Pan Yu, Guangzhou

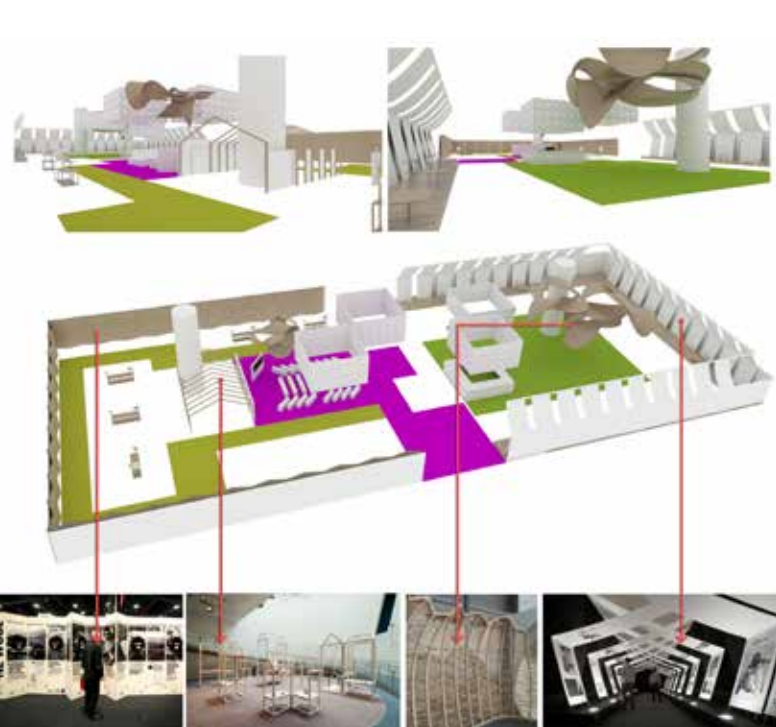
Tel: +86-20 34880186 / 34880187

Fax: +86-20 34880190

E-mail: info@artiegarden.com

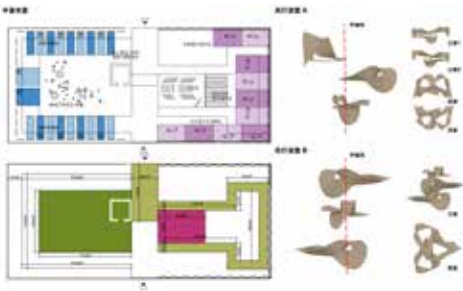


# 花园生活节展区设计理念 GGLF Exhibition design statement



设计团队: ATDesign office  
范铁 Tony Fan  
柳茹茵 Ruyin Liu  
Slavo Sisko  
陈星 Xing Chen

莫比乌斯环装置定制合作: 佛山亚太家私有限公司  
produced collaboration company: Foshan  
Yatai Furniture company



根据策展方提出的要求与想法，整个展厅为内部开放式布局，展示区域位于两边，中间核心为体验服务讨论区。中间区域具体功能包括为中心服务台、花园生活体验活动区、讨论区、猫狗舍概念设计区。我们从体验切入，将不同的户外花园体验抽象化，提炼，营造一种抽象的花园氛围，让“生活化”更明确。

在跟厂家进行多次沟通，对材料进行研究后，我们通过藤编的有机造型来表达“花园生活”的意境。鉴于藤这种材料的特性，为了平衡人工与自然美学，我们借鉴了德国数学家莫比乌斯（Mobius,1790-1868）和约翰·李斯丁发现的拓扑学结构莫比乌斯环，将其结合藤的柔韧性与光影关系，最终设计出悬挂在展厅中心区域的视觉中心。

对于猫狗舍这个展示设计师们为小生命做的关怀设计，我们采用的是接近于农舍外轮廓的小木房造型，营造温馨体贴的人文关怀氛围。

In accordance with the curator's requirements, the entire exhibition hall is designed as an open layout, so as to create the feeling that one is walking through a garden. Display areas are located around the garden life style zone which functions as the central hub. The hub includes a Service bar, information centre,

Garden experience relaxation zone, discussion zone and 'farm house' containing conceptual designs for dogs and cats homes. The key concept is centred around sensory experience. We want to recreate the spirit of outdoor garden spaces. Creating an abstract garden atmosphere that embodies the sense of calm and serenity of a well designed garden.

Having worked closely with manufacturers as part of our research into understanding the core materials, we express the "Garden Life" atmosphere through 'organic' forms.

In order to explore the balance between man made and natural beauty we drew inspiration from the German mathematicians Mobius (Mobius, 1790 ~ 1868) and John Li Siding. They discovered the seemingly organic and symmetrical geometrical structure of the Möbius strip. Utilising the rattan's flexibility and woven method, we created our own hanging sculpture in the hall of the hub based on this curious structure.

The farm house design connotes the warmth and comfort of a home for cats and dogs.

# ATDESIGN × agio® I like, My life

设计团队: ATDesign office  
范铁 Tony Fan  
柳茹茵 Ruyin Liu  
Slavo Sisko  
陈星 Xing Chen

合作厂家: 锡山家具集团 agio  
黄剑飞 Jianfei Huang  
邓国旺 Guowang Deng  
董文元 Wenyuan Deng  
龙小众 Xiaozhong Leng



我们设计的理念来自自然原始的形态，汲取花瓣与红唇在形态上微妙的比例关系，使得产品设计的轮廓更加清晰，更具有视觉效应。在色彩运用方面，双层内外的颜色强烈对比，使得设计的线条与轮廓感更为强烈，同时将藤与布的材料性展示地更随行。

在形体方面，从顶视图我们可以发现这是一个完整的圆，底座的支撑以弧形线条勾勒出形态，上部也以同样的方式保证了设计的统一性也丰富了变化。在使用方面，根据环球花园生活节所倡导的生活方式，设计可以运用在室内外的不同场景，同时也可以根据原料颜色与编织方式的变化而随之产生不同的效果。

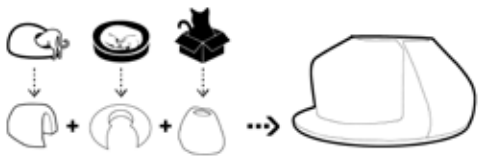
Design of the chair was developed from natural and organic shape of the flower leaves. The horizontal and vertical symmetry enhance the clarity of the design. We use different color and material for the inner and outer surface of the chair. Originally designed for rattan outdoor material with the color fabric from the other side.

The top view of the chair is perfect circle, from which the chair legs are simply extruded with the curved line to the ground. Upper form is following the same logic to create functional chair. The overall design is quite universal for indoor and outdoor use and it's possible to use different material and color combinations.

## 猫舍狗屋 Cats and Dogs House

作为现代家庭中一员，猫和狗在人们生活扮演着重要的角色。那它们平常喜欢做什么呢？它们喜欢钻进洞里，蜷曲在枕头上，还有从它们的小窝中钻出脑袋好奇地探索这个世界。那么，这间猫屋狗舍正好满足了它们的所有需求。如贝壳般的形状不仅是猫狗们温馨的避风港，也是它们的游乐场，它们可以在这爬进爬出，更可以在藤制的面料上磨爪子，从而减少其他家具被损坏的危险。

As a part of the modern families, cats and dogs play an important role in people's lives. But what do cats and dogs like to do? They like digging in holes, curling up on cushions, and sticking out curiously from their little houses. According to these activities, we design a house to satisfy all their needs. The shell-like organic form not only provides a comfy home for cats and dogs, but also serves as a playing area where they can crawl in and out, or even sharpen their claws on the rattan surface, which will be a huge relief to other furniture.





IAPA



美之滕家具  
MT FURNITURE

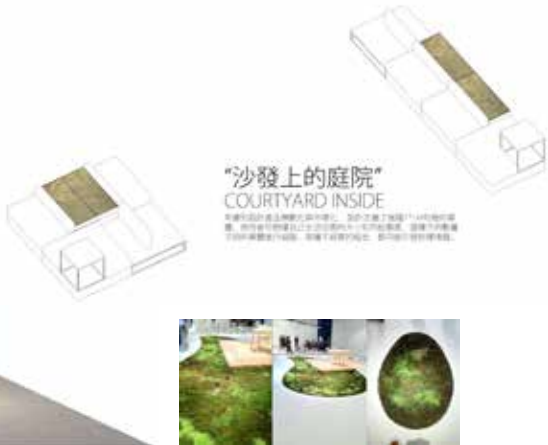
设计团队：澳大利亚IAPA设计顾问有限公司  
International Architecture Platform Australia  
胡彦 Yen Hu  
刘约君 Michael Liu  
曾喆 Nick  
黄穗强 Simon Huang  
杨洋 Yang Yang

合作厂家：中山市美之滕家具有限公司  
MT Furniture  
吴朝臣 Chaochen Wu  
宋亚平 Yaping Song  
李爱明 Aiming Li  
刘小魏 Xiaowei Liu  
伍颖琳 Wu Yinglinlin



**沙发上的庭院** 设计将青苔绿植置入到家具中，人们通过在“坐”、“立”等行为，身体在家具上形成了类似“建筑体”的物质体量，而青苔绿植则在这一过程中演变为被身体围合出来的“庭院”。

**Courtyard Inside** The design is inspired by traditional lives in the courtyard. Green plants usually seen in a courtyard are designed parts of the furniture that they create certain interaction with human movement, formulating similar relationship between architecture and human. By building such connection we intend to revoke the sense of traditional courtyard in modern living space.

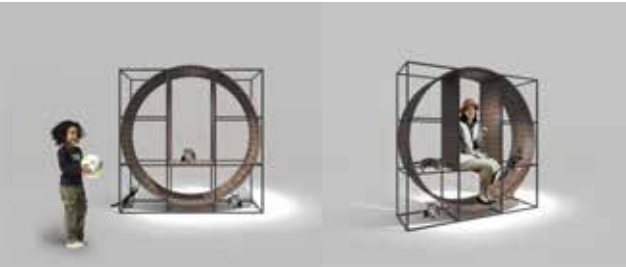
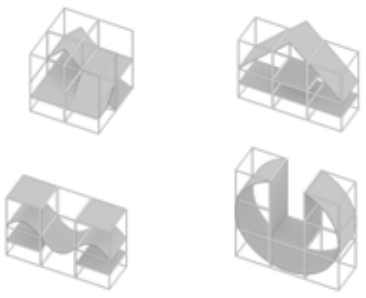
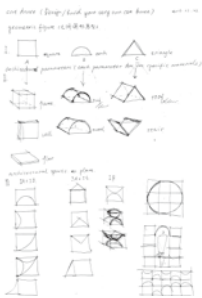


**猫舍** 设计由几种基本的几何图形进行演变，形成类似于建筑物内的不同构件。当这些建筑构件被缩小到可被小猫所感知的尺度后，既具有了人类所熟知的物质表征，也构成了小猫日常的游玩空间。

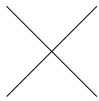
设计无意去定义猫舍的形式，所有的可能性都在主人与爱宠的互动过程中产生。考虑到设计产品模数化与市场化，这些（用布艺或藤编作材料）构件被置于40\*40\*40或者55\*55\*55两种尺度的金属框架体系中，主人可根据自己生活空间的大小和功能需要，选择不同数量不同构件进行组装，每种不经意的组合，都可能引发你和爱宠之间的别样情趣。

**Cat House** Evolution design consists of few basic geometry, form similar to buildings within different elements, when these building elements are narrowed to a kitten after the perceived scale of both material characterization of humans known, also constitutes a cat daily play space. Define cattery design intention to form, all possibilities are produced during the interaction between owner and pet.

Taking into account the design of modular products and marketing, which (with a cloth or Wicker material) components are placed in 40\*40\*40 or 55\*55\*55 system of metal frame in two different scales, the owner living space according to their size and function, select a different number of different components are assembled, each casual combination could spark between you and your pet's unique taste.



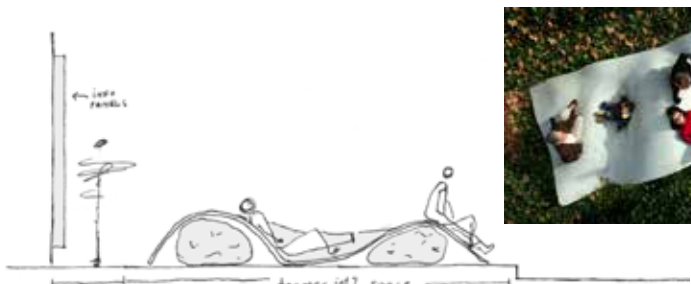
TEAMER INT'L  
天萌國際設計機構



悍高 HIGOLD

设计团队：TEAMER INT' 天萌国际  
陈宏良 Henry Chen  
Oriol Ribas  
Alonso Laybarra  
周诗弦 Shawn Zhou  
麦自南 Michael Mai

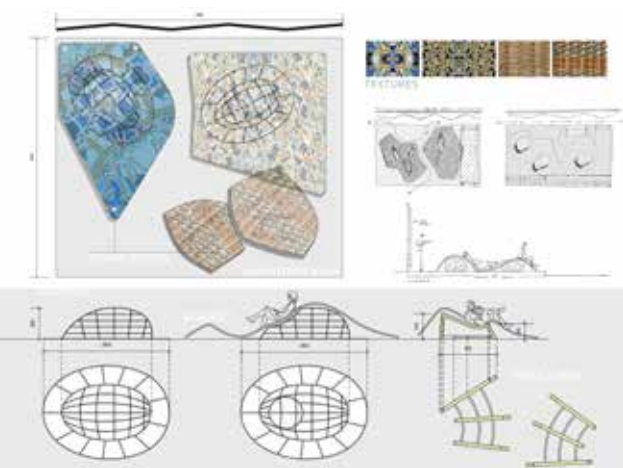
合作厂家：HIGOLD 悍高家具  
孙国华 Guohua Sun  
周丽菊 Lijv Zhou  
王清杰 Qingjie Wang  
杜君杰 Junjie Du  
苏锐扬 Ruiyang Su



天萌国际设计集团的设计是基于自由的户外空间的想法。像巴塞罗那、马德里、毕尔巴鄂或科尔多瓦等城市居民都喜欢户外开放的空间和阳光下的生活。在这些空间里，任何东西都可以成为坐下的地方，任何角落都可以成为躺下的地方，在绿色的庭院里，事物并不像表面看到的那样。

我们的设想是：一个充满花草的花园，一个自然的空间，而不是一个房间，带着隐藏的设计及绝对的灵活性，艺术品可以是一张长凳，椅子可以是一座雕刻。我们呈现的巴塞罗那花园，欢迎大家的光临。

Teamer Int'l has based their design for the outdoors space in the idea of freedom. Cities like Barcelona, Madrid, Bilbao or Cordoba base their likes in the open spaces, outdoors relationships and a life under the sun. In those spaces anything can become a sitting area, any corner can be a place to lay down, a green courtyard where things are not what it seems.



We propose a garden of grass and flowers, a natural space, not a room, with hidden planning and absolute flexibility, where the art is a bench and the chair is a sculpture. We present the Barcelona garden, where everyone is welcome.





arstudio  
雅桥创作室



EVER GAINING®  
藤话故事® Furniture & Decorations

帝加花园家具有限公司  
DE GARDEN FURNITURE

设计团队design team: 雅桥创作室  
陈丽乔 Q LK.Chan  
范毛建 Nicolas Fan  
陈聪 Cong Chan  
周瑜 Yu Zhou  
郑佳 Jia Zheng

合作伙伴design partner:  
香港鱼菜通CitiPonic HK CitiPonic  
  
香港鱼菜通CitiPonic  
好食好住好环境  
把食物种植带来城市



雅桥创作室本著“作品有形,作品即人品;空间无形,空间即人间”的信念,致力做好每一个项目,善用每一个机会,每一分地球资源,用心考虑日后的使用及管理,为未来留下负责任的設計,亦強調项目的文化与艺术内容,为人类建造美好的生活环境。

ArQstudio believes that “Space is where life happens and designs show designers’ care for people” and in each project or product, due care is taken to make sure that the opportunities are optimized, natural resources are well utilized and future operations and management are well considered. Apart from being sustainable, all projects and products are enriched with cultural and artistic content that aspire human lives.

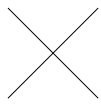


本次将与佛山帝加,东莞藤话故事一起研发并展出以下产品:

- 1-Stacking Sheep Furniture 組合羊傢俱(戶外)
- 2-Panda Series 熊貓系類傢俱
- 3-Balcony mini bedroom 陽台小臥室
- 4-Citiponic Sofa 魚菜通傢俱
- 5-Cat house 貓窩



漢森伯盛™  
SHING & PARTNERS  
國際設計集團 SINCE 1993



yun ge  
云格蘇特

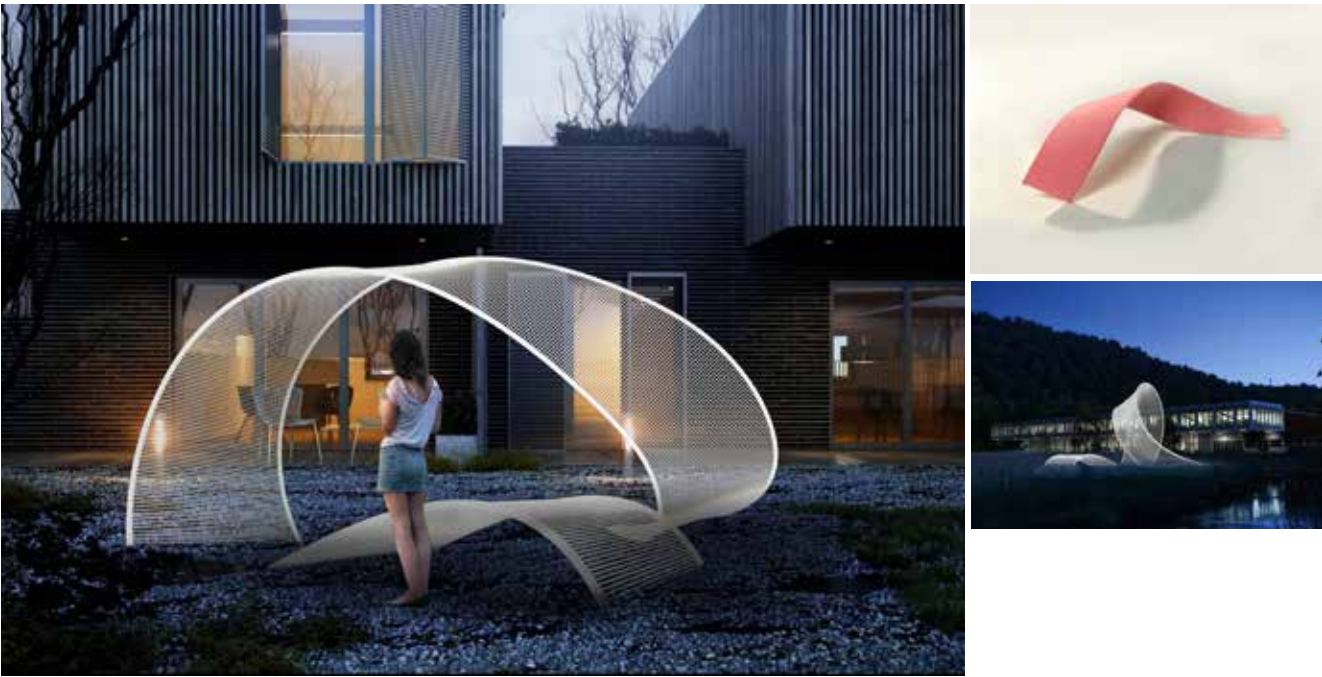
设计团队:  
汉森伯盛国际设计集团  
杨亚峰 David Yeung  
王启荣 Kevin Wong  
麦 祺 Maggie Mai

合作厂家:  
中山云格金属家具有限公司  
何伟球 Weiqu He  
何伟欢 Weihuan He



织桥 无论在露台还是花园,棚架都是很实用的户外家具设计。一方面它可以划分出相对独立的活动空间、丰富了空间层次,形成庇荫玩乐的开放场所。另一方面依附在棚架上的立体绿化为设计增加了时间的维度,使其随着时间的推移展现出不同的特点,从而增添了很多的趣味性。

Weave bridge A pergola is a useful outdoor furniture design no matter at terraces or gardens. For one thing, it delimits a relatively independent space, which enriches the arrangement of space and forms an open place for giving shade and relaxation. For another thing, the vertical planting attached to the pergola adds the time dimension of the design, which will present different features as time goes by, thus making it more interesting.



#### 猫大厦 Skyscraper

为了创造出适合猫咪活动的空间,我们设计制造了名为SKYSCRAPER的猫屋。我们根据猫咪喜欢跳跃的特点,着重于打造竖向的活动空间。设计选取城市中林立的摩天楼为切入点,将猫咪休息、放松、睡觉等空间都设置于其中一个个的平台上,任其随心所欲的穿梭、攀爬。

In order to create a space suitable for cats, we designed the cat house named SKYSCRAPER. We mainly built vertical spaces for cats are very fond of jumping on and off. The design selected the commonly-seen skyscrapers in cities as the breakthrough point and placed the spaces for cats to rest, relax and sleep in different terraces so that they can shuttle and climb back and forth freely.

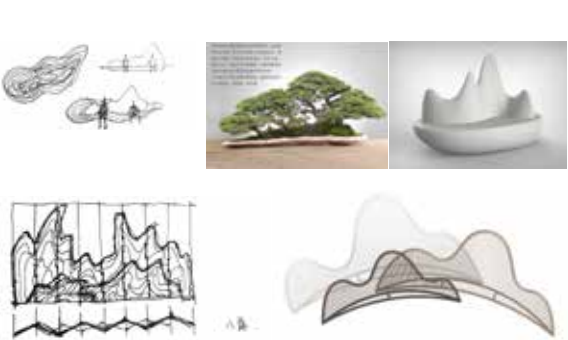






设计团队：JS张健衡建筑事务所  
张健衡 Jane Zhang  
曹侨丹 Qiaodan Cao  
戚瀚兴 Hanxing Qi

合作厂家：亚帝Artie  
程兵 Arther Cheng  
梁钊勇 Zhaoyong Liang  
黄俊杰 Junjie Huang  
陈湛峰 Zhanfeng Chen  
郑立德 Lide Zheng



**石山座椅** 灵感来源于盆景微缩山水的自然情怀。这组家具可坐可躺，至于户外庭院中有如假山石，完美融入景致，本身成为视角焦点；至于泳池，冒出山尖，坐卧其中另有情趣。这组家具同样适合大堂和过厅等室内或者半室外场所。山形的大小可以根据空间定做，基座的形态也可以是圆形、鹅卵型、扇形等。

**山屏** 这组山形的屏风，呈微弧形，适合根据空间的大小和心情自由组合。组合的山景，是庭院里的背景，可以划分空间，也可以成为一组户外家具或者小品的靠山。

**Stone Mountain Seat** The inspiration of the seat comes from the natural feelings of miniature landscaped bonsai. The set of furniture can be used for both lying and sitting. Put in the courtyard, it looks like an artificial rockery completely blended with the nature and becomes a visual focus; put in a swimming pool, lying or sitting on the seat is a great fun with its top exposed outside the water. It is also perfect for interior or semi-outdoor places such as main foyers and passage halls. The size

#### 石头窝窝 Stone House

石头形态演变出来的猫窝狗屋是一个室内外皆宜的精品组合，你可以自己创造山水的景致。猫窝是猫咪玩耍的小山岗，狗屋是狗狗最爱的小山洞。

The stone-shaped dog and cat house is a premium combination suitable for both indoor and outdoor places. It offers you to create a natural landscape where the cat house is a small hummock for cats to play and the dog house is a small cave favored by dogs.



of the mountain can be customized according to the requirement of the space and the shape of its base can be round, elliptical, fan-shaped, etc.

**Mountain Screen** The slightly-curved mountain-shaped screen is suitable for free recombination according to the size of the space and the mood. The combined mountain scenery is the background of courtyards. It can be used as a divider of space, a set of outdoor furniture or the backing of short sketches.



Design Team: atelier oi  
Armand Louis  
Aurel Aebi  
Patrick Reymond  
Jonas Seiler

合作工厂：佛山亚太家私有限公司  
Foshan Yatai Furniture Company  
梁宇鹏 Yupeng Liang  
梁梦维 Mengwei Liang

环绕在户外蜡烛装置的温馨灯光之中，我们邀请参观者坐在由我们与广东本地生产商业亚太家私联合打造的座椅上。椅子由两个半球形结构组成，用藤条编织而成。通过采用碗/半球的形状，椅子就能够像厨房里的碗一样一个个叠起来。这样不用的时候就能很方便地把椅子收拾起来。

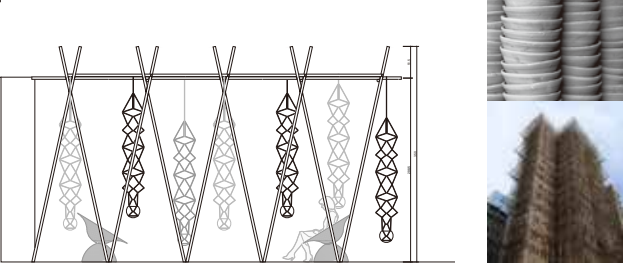
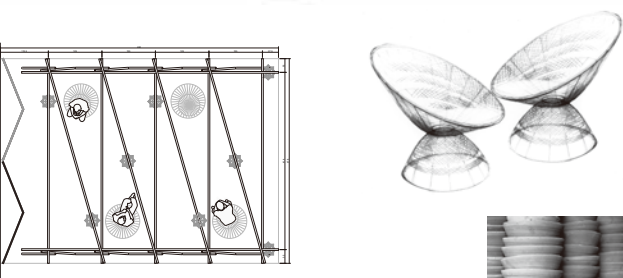
我们的户外蜡烛装置有三种规格。最小的是皮制户外蜡烛装置。

狗屋采用了和我们其余装置一样的元素。一个纤薄的三角结构为宠物创造了活动空间，藤条织成的网盖住半球形狗屋的各面。

Surrounded by cosy atmospheric light coming from our outdoor candle installation the visitor is invited to take a seat in our chairs developed in cooperation with local manufacturer Mr Dream. The chair is created with two spheres and built with the woven structure of rattan. Those hemispheres refer to the typical local ceramic bowls while the rattan reminds us of the traditional bamboo baskets.

Our installation is composed with three different scales. The smallest one is our leather outdoor candle.

The Doghouse picks up the same elements as the rest of our installation. A thin triangular structure creates a space for the pets, the rattan covers the facets of the hemisphere.







设计团队：营造学舍  
谢应岷 Yingmin Xie  
辛夷 Yi Xin  
刘卓君 Zhuojun Liu  
黄毅峰 Yifeng Huang  
潘敏婷 Minting Pan

合作厂家：德锐家具  
DERRY FURNITURE  
谢叶松 Yesong Xie

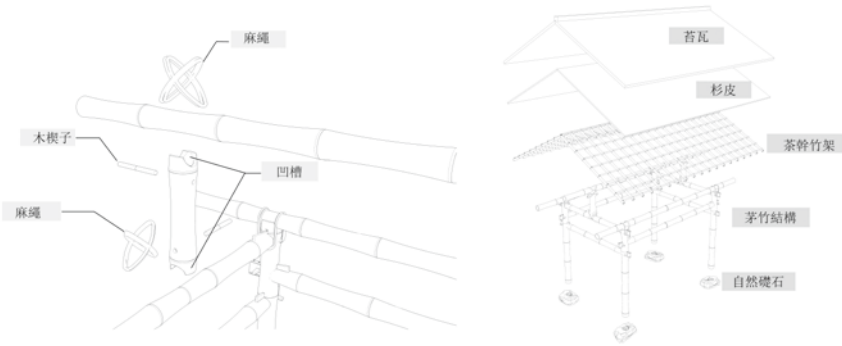
设计非设计：书房——归去来兮

【解释】：归：返回。回去吧。指归隐乡里。  
【出自】：晋·陶渊明《归去来辞》：“归去来兮！田园将芜，胡不归？”

以竹木石苔等质朴的材质卯榫结构形式搭配而成传统文人书房，用半透布幕与编织屏风作间隔，园林间植芭蕉与墨竹，配上清风，沙沙影动，开间布上明式家具，挂上画与琴，焚香一炷，一幅园居生活，跃然景上，这里无关设计与创意，是生养一种生活气色，气色好正是我们追求的生命形色生意呈现。

The “Back to Nature” Study

The traditional-style study of literati is decorated by plain natural materials like bamboo, wood and stone. It is separated by a semitransparent curtain and a woven screen with some plantains and bamboos planted in the garden, which will “dance” with the breeze. With the Ming-style furniture placed in the space and some paintings and musical instrument hung on the wall, plus burning incense, a picture of garden life will stand vividly in front of you.



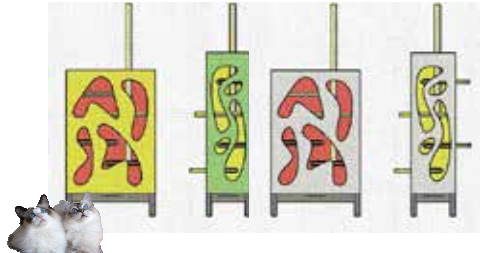
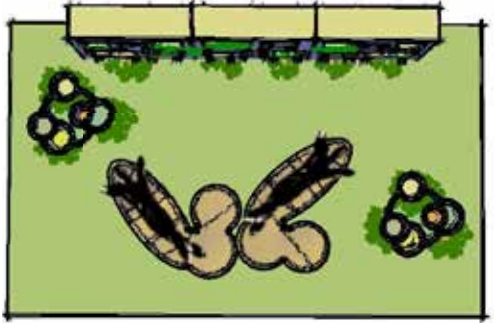
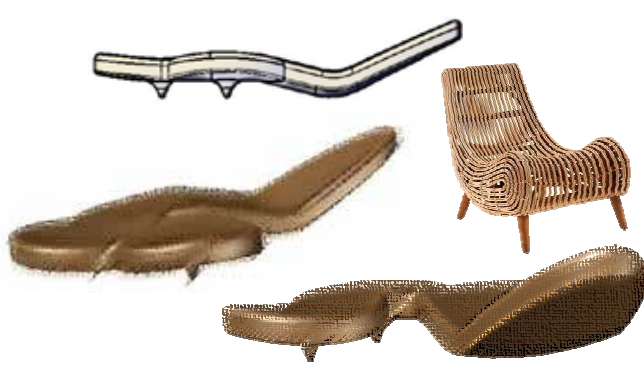
设计团队：ESTERNI INTERNI design  
PAOLA PALMA  
CARLO VANNICOLA

合作厂家：华通户外家具  
杨铨超 Quanchao Yang  
李丽娜 Linna Li  
陈健 Jian Chen  
杨家杰 Jiajie Yang  
梁嘉伟 Jiawei Liang



照顾好自己也就是要更多地认识他人和介绍自己。空间、家具和物品的设计是对物品本身毫无保留地展示，同时设计也蕴含着其原则：人文情怀、环境主义和动物主义就是本项目努力的目标。空间的大小并不重要，分享、定制表现自我的空间才能让您保留城市生活的乐趣。

Taking care of yourself means to amplify the chance to know each other and to explain yourself to others. Designing spaces, furniture, objects, which expose themselves and not hide, in which to live their principles: cultural interest, environmentalism, animalism, is the goal toward which the project. It does not matter if the space is large or small, share, customize the space to ours expressions, is the action that allows you to not give up the pleasures of living in cities.





GARC



BOSCHER博舍  
GREEZU贵竹



设计团队：GARC 田阳、李苏萍  
DOT Studio 黄勇  
合作厂家：广东顺德博舍家具有限公司（展区）  
佛山亚太家具有限公司（猫狗舍）  
江西省贵竹发展股份有限公司（猫狗舍）

**坐景** 在《坐景》的设计中，我们试图探索如何基于有限的单体，形成室外家具多样组合的可能性。通过研究，我们选定两种基本模块－菱形及梯形六面体，以木条相间隔的组建连接方式，让两个基本模块在不需额外零件的前提下，彼此穿插咬合。这种连接方式不仅坚固，也便于使用者操作。此外，通过在模块侧面增设具有一定强度的网布，设计进一步拓展了模块摆放以及三维组合的可能性，从而可以进行灵活组合、构建出多种场景，以满足不同户外活动的需求。

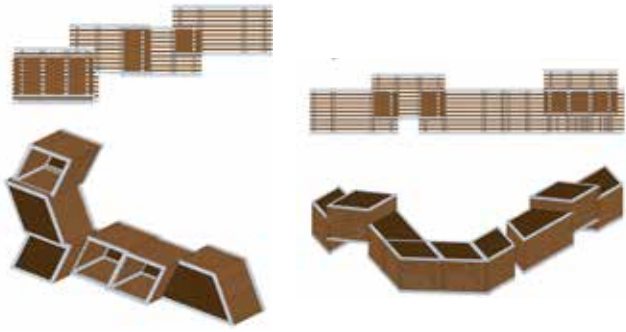
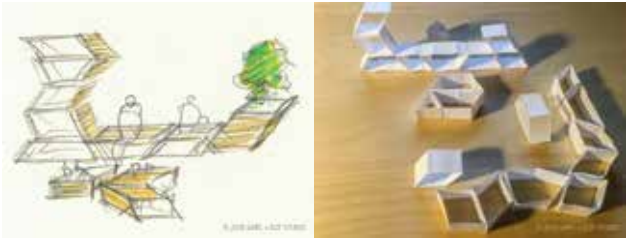
**Seatscape** In the design of Seatscape, it is intended to explore the possibilities of creating multiple combinations with a few limited components. Through research, we choose a rhombohedron and a trapezoidal hexahedron, framed on four sides, as two basic modular units. In terms of connections between two modules, the alternating pattern of wood frames is the key to interlock with each other without any extra parts. This connection is both strong and easy for users to manipulate. In addition, by adding a piece of meshing cloth on one side of the opening, it further expands the possibility of placement and configurations to meet the needs of activities.



#### 七巧流浪猫舍 Tangram Homeless Cathouse (THCH)

装置设计成为猫的进食、休息以及游戏的场所，并在恶劣天气下为猫咪遮风避雨。借鉴七巧板的概念，装置由七个元素组成，每个元素体积不大，有顶面和底面。侧面有部分隔断，拼在一起可形成连续的开放结构，让警觉性较高的流浪猫自由出入，不会受到惊吓。同时各单元底层架空，顶面平齐，为猫咪提供了双层活动空间。

The THCH is conceived as a place for cats to eat, rest, and play, as well as a shelter in severe weather. Inspired by the concept of Tangram, the installation is composed of 7 individual components. Each is relatively small and built with a top and bottom. Their sides are partially enclosed in order to form a continuous pathway for cats when all components put together. It allows vigilant homeless cats to freely access without being scared. In addition, each unit is elevated on legs of various heights with the tops aligned, which provides two levels of space.



Booth No. :  
Hall 17.1 C01  
Poly World Trade Center  
展位号：17. 1C01  
保利世贸博览馆



E : info@nhyatai.com  
W: WWW.MR-DREAM.COM  
T: 0086-757-8577 0647  
F: 0086-757-8577 6071  
ADD: NO.30 XINCHENG INDUSTRIAL AREA  
HEXI YANBU NANHAI FOSHAN CITY  
GUANGDONG, CHINA.  
广东省佛山市南海区盐步河西新城工业区30号



# DEEPCULTURAL

Arts And Fashion Design Elements Combine

Through restraint design, rigorous selection, compact size and natural warmth of the painting, rendering elegance



Foshan Ivy Furniture



## IVY China Quality Supplier Furniture

- \* FURNITURE LEADING ENTERPRICE
- \* OUTDOOR FURNITURE SOLUTIONS



**onlyfire**  
outdoor gas experts

**FOSHAN SHUNDE ONLYFIRE TECHNOLOGY CO.,LTD**

Add: Bijiang Industrial District, beijiao Town, Shunde, Foshan.

Email: onlyfire\_eric@126.com

Contacts: eric xiao

Tel: **13360363210**

Guangdong Shunde Ivy Furniture Co., Ltd.

Tel: 86-757-28907197 28901297

Fax: 86-757-22815975

E-mail: eric2613@126.com

Mobile: 133 2679 7197

<http://www.cqt-f.com/> <http://ivy-f.en.alibaba.com/>





来自美国的高端品牌

agio®  
I like, My life

锡山家具

SHIANCO®

THE TOP IN & OUTDOOR LEISURE FURNITURE  
高端室内·户外休闲家具

I Like,  
My Life!



www.agio-cn.com  
关注更多锡山家具详情



微信公众号: agio-china  
扫一扫 发现更多休闲资讯

400 831 0833 0757 26606722

中国区加盟专线

BOSCHER 博舍

The next green goods



BOSCHER®博舍家具选择自主研发与生产的Sumpar®森柏木作为基本材料，森柏木由多种工程纤维通过一系列专利技术和特殊的专有技术制作而成，森柏木具有杰出的超耐水性和超耐候性，与天然柚木具有同样的质地和手感，其外观、颜色、物理性能、加工性能也与天然木材相近，更突出的优点是可以循环使用，节约资源、让我们一起为保护地球的生态环境做出一份贡献。

Boscher Outdoor Furniture selects Sumpar wood as the base material. Sumpar wood is an advanced polystyrene wood that is methodically put together with compositions of engineering plastic and engineered plastic fiber through a series of patented technology and special proprietary technology. Sumpar wood has been recognized for its outstanding water resistance and weather resistance, and has the same texture as natural teak wood. In addition, its feel, appearance, color, and processing properties are similar to natural wood. Sumpar wood is innovative as it is made from recycled materials, thereby conserving natural resources and protecting the environment.



SUMPAR®森柏木·网布



SUMPAR®森柏木·铝合金

公司名称 / Company: 广东顺德博舍家具有限公司

公司邮箱 / Email: Figo@boscherfurniture.com

工厂地址 / Address: 广东省佛山市顺德区大良街道顺德科技工业园五沙顺昌路5号

服务热线 / Tel: 0757 - 2838 7303

公司网址 / Website: www.boscherfurniture.com





帝加花园家具有限公司  
DE GARDEN (CHINA) LTD.



帝加花园家具有限公司,以广东佛山南海为基地,以母公司香港胜通亿源公司二十年欧美高端花园家具市场成功经验为依托,以“带给您世界级的花园时尚”为宗旨,从上世纪 2005 年开始将欧美市场最时尚高端的花园家具系列引入中国市场,从此“帝加”品牌在中国创立,豪华户外家具在中国有了代名词。迄今帝加已在广东,北京,上海,成都,重庆,···等地设立多家专卖店,经销店,加盟店,市场营销遍布全国。帝加先后合作过众多在中国新建的国际著名超 5 星级酒店:康莱德酒店 (Conconde)、希尔顿酒店 (Hilton); 瑞吉酒店 (St.Regis)、喜来登酒店 (Sheraton)、美国豪生 (Howard Johnson)、洲际皇冠假日 (Crown Plaza)、戴斯 (Days Inn)、华美达 (Ramada)、豪华精选 (The Luxury Collection) 等酒店项目。这些著名的国际酒店的阳台上、花园里、海滩旁、泳池边,你都可以看到帝加豪华户外家具的身影!



帝加花园家具有限公司

厂址: 佛山市南海区里水镇和桂工业园 B 区顺展北路二号  
电话: 0757-28784618 传真: 0757-28904332  
邮箱: info@de-garden.com  
www.de-garden.com



有些事无需赘述 有些人从未停留 不断地追寻与发现  
让距离拉近自然 与生活在这里悄然相遇

Life is not a lack of beauty, but is a lack of discovery.  
Life, when discovered, has value.  
Life, because of discovery, then appears colorful.  
Chase life  
It is a way to chase happiness, so never stop.

生活中并不缺少美,而是缺少发现 生命,由于发现才有价值  
生活,因发现才显得多彩  
逐梦生活 是对幸福永不止步地追求 因为追求,因此发现  
发现极致,发现喜好 发现喜好,进而美妙  
然而,生活不止一面 创造一种情景和状态  
感知生活最原本的模样 是时候停下,发现内心最真实的自己  
继续追寻幸福的过程,本身就是种幸福

其实,生活本就是如此静好  
是时候重新发现生活



佛山市德锐家具有限公司  
地址: 中国广东省佛山市三水区西南街道周灶村  
电话: +86 757 -87572680  
网址: www.derry-living.com



# 绿丹雅工艺品有限公司

## Green Da Technology Co. Ltd.

地址: 东莞市企石镇南坑工业园

电话: 0769-86004289

传真: 0769-86004289

QQ: 848657128 1025765415

微信: 13316644446

邮箱: M13316644446@163.com

网址: www.idygyp.com

阿里巴巴网站: http://idygyp.1688.com

联系人: 蔡信龙

手机: 13316644446

Address: Dongguan Qishi Nankeng Industrial Park

Tel: 0769-86004289

Fax: 0769-86004289

QQ: 848657128 1025765415

Micro channel: 13316644446

E-mail: M13316644446@163.com

Http: www.idygyp.com

http://idygyp.1688.com

Contact: Cai Xinlong

Mobile phone: 13316644446

绿丹雅工艺品有限公司  
Green Da Technology Co. Ltd.



## 度假 从家开始



东莞市嘉鹏金属制品有限公司

Golden Eagle Outdoor Furniture Co., Ltd.

海外事业部(Oversea): +86-769-82830861/2

国内销售部(Domestic): 400-8090-160

E-mail: michael@gefurniture.cn 传真(Fax): 0769-82830863

地址: 广东省东莞市石排镇石崇工业园A2区B座

ADD: Block B, Zone A2, ShiChong industrial District, ShiPai, Dongguan, Guangdong Province, PRC.

www.gefurniture.cn www.jiapenghome.com



# 佛山市艺骏雄塑胶仿藤有限公司

FOSHAN YIJUNXIONG PLASTIC RATTAN CO.,LTD



佛山市艺骏雄塑胶仿藤有限公司为了寻求仿真度更高的藤条而不断研发,从2013年开始运用第二代仿真纤维材料开发产品,从而相继诞生了“谷叶”、“魔叶”等新型产品,并在这两个系列的基础上,延伸出“谷叶V系列”、“魔叶O系列”、“魔叶W系列”、“魔叶S扭藤系列”、“魔叶WS扭藤系列”、“MS扭藤系列”等。

这些产品具有柔软、着色自然、质轻和容易编织的特点。另外,研发人员还对产品进行了后加工,令藤条产生了独有的无序特性,降低了产品的工业味,让产品更多变,更接近自然。

目前,这些藤条的部分系列已经被知名家具品牌公司运用,并取得了良好的反馈。艺骏雄相信,未来的传统编织将会被我们的新产品打破格局,它将改变消费者与设计师对编织家具既往的固有认识,引领编织界进入一个新的时尚世代。

Add : 广东省佛山市顺德区北滘镇  
工业园展业路2号  
Tel : 86-757-26600661  
86-757-26600662  
Fax : 86-757-26322441  
E-mail : sdyijun@21cn.com  
www.china-ago.com



所有产品均受专利保护,仿冒必究。



# ABOD

A JOURNEY OF DISCOVERY  
BETTER COMFORT DESIGN

优越生活 体验无限



## CLOVER LIFESTYLE COMPANY LIMITED

Add. 地址 : Rm 1809, Building 2, Ramada Plaza, Beijiao Town,  
Shunde District, Foshan City, Guangdong Province, PR China 528311  
Email 邮箱 : info@cloverlifestyle.com Phone 电话 : +86-757-26609627 / 2660 4387







# Farmhouse Lennik



Studio Farris Architects was commissioned to convert the complex of house and stables of an 18th century farm located in Lennik, a small town in an agricultural area close to Brussels, into a single family house.

Of the 4 existing volumes, a storage room and pigsty were demolished, while the other pigsty and the adjacent 1960's house were renovated.Starting from a careful research and study of the farmhouse typology and how to keep and reinforce its authenticity while at the same time allowing it to answer to contemporary living standards, a concept that is often seen in old farms around the area was applied.To provide each room with the necessary amount of natural light, windows and doors were bricked up and cut out in a pragmatic way, making the façade a whimsical patchwork of old and new scars that show

its history and give back and reinforce the identity it had lost over the years.A box-in-box system was created to avoid any chemical reactions with sulfates in the ground and walls of the original farm. This system also takes care of the energy-efficiency of the house.Typological fragments are reinterpreted throughout the house. The fireplace, which is a 6 meter high, suspended steel construction, is the heart of the house.

The front garden was designed to create serenity and connect the farmhouse to its outbuildings. The backyard is a patchwork of pragmatic shapes in typological materials that enhance the connection with the horizon and create unexpected perspectives.

## 莱尼克田园别墅

法里斯建筑工作室（Studio Farris Architects）受委托将一些建于 18 世纪的农舍和马厩改建成一座独栋的家庭别墅。这座别墅位于靠近布鲁塞尔的农耕区的莱尼克小镇。

在对现存四座建筑的改造中，一间储藏室和一间猪舍被拆除，另一间猪舍和相邻的一座建于 19 世纪 60 年代的房屋则已进行修缮。前期细致的调研工作集中在别墅的类型，以及如何在保留和增强其真实魅力的同时，使别墅符合当代生活的标准。项目最终采用了周边老旧农场常用的一种设计理念。为了让每个房间都能有充足的自然光线，别墅的门窗都用砖块砌上，并以实用的方式进行切割，使墙面布满“新伤旧痕”，像一个古怪的拼辍物，彰显着历史的沧桑，重现并增强别墅早已消失多年的特征。在结构上，别墅采用了一种“双重体量”做法，避免与原农场地面和墙壁上的硫酸盐发生任何化学反应。这种结构同样考虑了别墅的能效。

别墅重新诠释了建筑的各个部分。屋内壁炉高 6 米，是悬挂式的钢结构，也是整栋别墅的中心。别墅前部的花园旨在营造安静的氛围并连接别墅及其附属建筑。后院有着实用的外形，看起来也像一个拼辍物，改造过程中使用的各类材料增强了视觉效果并营造出意想不到的景观。



建筑师：法里斯建筑工作室 Studio Farris Architects  
地点：比利时莱尼克  
建筑工程师：杨·凡·艾斯特（Jan Van Aelst）  
承包商：Alpha-Mat  
面积：256平方米  
工期：24个月  
进展状况：已于2013年7月完工

Architect:Studio Farris  
Location:Lennik, Belgium  
Structural engineering:Jan Van Aelst  
Contractor:Alpha-Mat  
Size:256 square meters  
Construction time:24 months  
Status:Completed in July 2013







## 日本建筑师的树屋梦， 兼具惬意与诗意的户外空间

小林崇（Takashi Kobayashi）是日本的一位树屋建筑师，根据 2013 年的数据，他在之前的 15 年里修建了超过 120 座树屋。2000 年建立日本树屋网，2005 年成立自己树屋工作室（Tree House Creation），可以说是日本的“树屋大师”。

比起用来装饰，小林崇修建的树屋大多有实际用途，例如他的作品中有咖啡屋、服装店，还有为作家提供的“自由自在”创作氛围的空间、为患有晚期疾病儿童修建的玩耍的空间等。人们通常会委托他做一个与世隔绝的地方，希望尽量减少现代科技的影响，能够回归自然还不用担心树上的虫子。他在修建时坚持使用当地的木头，注意适应树本身的特点，考虑它未来的生长和发展。但树屋的保养依然是非常重要的后续问题，过去就曾发生过因保养不善，树屋在台风或海啸中倒塌了的情况。

\* 图片来自日本建筑事务所 Hiroshi Nakamura of NAP Architects (<http://www.nakam.info/en/>)

完工时间：2014.03  
用途：茶室  
结构：不锈钢 + 木结构  
总面积：9.97㎡  
地理位置：静冈市  
结构设计：Arup  
建造商：Treehouse Creation

Completion：2014.03  
Principal use：Tearoom  
Structure：Steel structure + timber structure  
Total floor area：9.97㎡  
Building site：Shizuoka  
Structure design：Arup  
Contractor：Treehouse Creation

Takashi Kobayashi is a Japanese architect of tree house. According to the statistics of 2013, he had built over 120 tree houses in the previous 15 years. He started Japan Treehouse Network in 2000 and founded his own tree house studio Tree House Creation in 2005, which, to a great extent, made him the “master of tree house” in Japan.

Most of the tree houses built by Takashi Kobayashi are practical rather than simply decorative. For example, his works include cafés, clothing stores and space with a “free and easy” atmosphere for writers to create works and seriously ill children to play. People usually entrust him to create a place isolated from the rest of the world to avoid the influence of modern technology as much as possible so that they may return to the nature without worrying about the bugs on trees.

He insists on using the local wood for construction, makes use of the characteristics of trees and takes their growth and development into account. But the follow-up maintenance of tree houses is still an issue of great importance, as previously some tree houses have collapsed during typhoons or tsunamis due to poor maintenance. Bird's Nest Atami, located in Shizuoka, Japan, is the largest tree house by Takashi Kobayashi. It was co-constructed by Takashi Kobayashi and the architectural firm Hiroshi Nakamura of NAP Architects by the invitation from Risonare Resort. It's built on a 300-year-old and 120-meter-high cinnamomum kanehirai. To avoid harming the growth of this tree, designers simulated each angle of the ancient tree by 3D modeling and then set up the tree house with a steel-wood structure to make it completely independent from the trunk giving consideration of safety and appearance.

A footpath leads to this tree house and it winds up from the ground through other trees, just like an amusement park in the woods. Outside the tree house, there is a terrace where people can sit down for coffee; and a small polygonal house is set inside, also a nice place for tea and chat. The actual area inside the tree house is less than 10m2, but it's still the largest one in Japan when the footpath and terrace outside is included. People can walk freely on the reticulate footpath and floor, embracing the primitive feeling of being surrounded by the thick branches and leaves.

\* Images courtesy of Japanese architectural firm Hiroshi Nakamura of NAP Architects (<http://www.nakam.info/en/>)



小林崇修建的最大的一个树屋位于日本静冈市，是受 Risonare resort 酒店邀约，和建筑事务所 Hiroshi Nakamura of NAP Architects 合作完成，名叫 Bird's Nest Atami（热海鸟居）。这是当地一棵已经有 300 年历史的牛樟木老树，高 120 米，为了不伤害树的生长，设计师们通过 3D 建模模拟了老树的各个角度，再使用钢铁结构和木结构搭建，让中间的树屋完全独立不会碰到树干，同时兼顾安全和美观。

到达这座树屋前要经过一条步道，步道从地面蜿蜒上升，穿过其他的树木，就像一个树林中的游乐场。树屋外是一个可以坐下喝咖啡的小平台；树屋内部是一个多边形的小房子，也可以在这里喝茶聊天。树屋内的实际面积不到 10 平米，不过加上步道和外面的平台，它是日本目前最大的树屋。人们可以在网状步道和楼层上自由行走，感受被茂密的枝叶包围的原始感觉。





# Predictions on Trends of Home Decor by Pinterest

## Pinterest 的家居趋势预测



pinterest.com 作为全球最受欢迎的图片社交网站之一,以其方便搜索及保存图片、瀑布流展示图片、用户自发创建图片列表等优势,吸引人们在这里搜索服装搭配、收纳方式和房间装饰等图片。最近 Pinterest 发布了“100 for 2016”栏目,根据 2015 年各个门类里被最多人收藏的图片和最具影响力的用户来预测了 2016 年可能会流行的 100 种趋势,其中家居门类中有一些风格和小细节的装饰可供参考。

As one of the most popular photo sharing websites in the world, pinterest.com attracts people to search for photos of costume matching, storage methods and room decoration with its advantages of convenient searching and saving of photos, infinite-scroll layout of photos and personalized photo lists created by users.Recently, Pinterest has launched a column of “100 for 2016” and predicted 100 popular trends in 2016 based on the photos added to favorites by the most users and the most influential users, among which there are some decorations with certain styles and details available for reference in the category of home decor.



### 斯堪的纳维亚风格：

这种最早发源于北欧的极简主义风格已经流行了不知道多少年,事实证明它还会继续受欢迎,在 Pinterest 另一份总结 2015 年热搜词汇的榜单上显示了六个国家(美、德、法、巴西、英、日)各自热搜榜单的前十名关键词,斯堪的纳维亚风格均列其中。所谓斯堪的纳维亚一般认为是丹麦、瑞典和挪威的总称,但谈及这种设计风格就是指北欧丹麦、挪威、瑞典、冰岛、芬兰几个国家的那种以质朴、明亮白色为主、几何结构并讲求功能性的简单、现代风格。常见家具原料包括木质、金属以及编制品。

### Scandinavian style:

This minimalist style originating from Northern Europe has been popular for so many years and facts have proved that it will stay popular in the future. A list of hot words in 2015 on Pinterest showed that the Scandinavian style is among all the top 10 keywords from 6 countries (the United States, Germany, France, Brazil, the United Kingdom and Japan).The so-called Scandinavia is generally believed as a general term for Denmark, Sweden and Norway, while the Scandinavian style refers to the simple and modern style of geometric structures and functionality with plain and bright white as the main color in Denmark, Norway, Sweden, Iceland and Finland. The Scandinavian furniture is usually made of wood, metal and fabrics.

### 图案抱枕：

用几个带图案或者颜色丰富的抱枕,大概是给一个空间带来活力和亮眼色彩最简单的方式,而不管是几何纹路还是卡通形状的都是很好的点缀。

### Patterned bolsters:

It may be the simplest way to bring vigor and bright colors to a space with several bolsters with patterns or rich colors. Bolsters either with geometric patterns or cartoon characters would be a great choice.



### 编织墙饰：

如果想装饰墙面,又不想用最常见的艺术画作的话, Pinterest 认为 DIY 的手工编织品是个不错的选择。可以混合不同的颜色、样式,产生各异的风格。若选择自己织,笨拙的手艺出来的效果感觉也会很萌。

### Woven wall decorations:

Pinterest thinks that handmade DIY knitting is a great choice if you want to decorate the walls with something else rather than common paintings. Different colors and types can be mixed together to create distinctive styles. If you want to knit them by yourself, your clumsy technique will still create a cute effect.





# New Ways to House Air Plants

## 让“空气凤梨”成为家居中特别的一角



### Airplantman

景观设计师乔什·罗森（Josh Rosen）特别钟爱铁兰，他甚至自称“铁兰人”。他制作的容器非常精巧，既突出了铁兰异域的优雅，又便于照料铁兰。他制作的铝架（售价110美元起，有五种颜色可选）覆盖有涂层，防水防锈，可以用来做一个立式花园，每周喷点水雾即可。把铝架挂在墙上，或用木质支脚（单独出售）支在桌子上，甚至可以水平放置，搭一个“空中花园”。

### Airplantman

Landscape architect Josh Rosen is such an admirer of tillandsia that he's dubbed himself Airplantman, and his artful vessels accentuate the plant's strange elegance while making it easy to tend to. Create a vertical garden with his powder-coated aluminum frame (starting at \$110 and available in five different colors), which is waterproof and won't rust—so spray away during the week. Hang it on the wall or use the wooden feet (sold separately) to set the frame on the table, even horizontally to construct a "floating" garden.

### HRUSKAA

位于密歇根州大急流城的HRUSKAA从斯堪的纳维亚的简约风格中汲取灵感，用坚硬的细铜管和尼龙绳创作出纯手工的几何活动挂件。虽然没有铁兰做装饰，但这些作品既直观又绝妙；小件作品还可当作独特的树木装饰和树顶装饰。需要注意的是，购买价不包含铁兰。

### HRUSKAA

Grand Rapids, MI-based HRUSKAA takes inspiration from Scandinavian simplicity, creating handmade geometric mobiles and hangings from solid brass straw and nylon cord. Even without being adorned by an air plant, the sculptures are straightforward and spectacular; the smaller ones also make unique tree ornaments and toppers. Note that purchases don't include the plant itself.

铁兰，俗称“空气凤梨”，无根，易养护，外形奇特，无需土壤即可茁壮生长，需“宝座”一尊来搭配其独有的异国风情。厌倦了普通的花瓶或玻璃容器，我们寻找创造性的方式，来展现铁兰这一可爱的“异类”，以下是我们挑选出的一个集合。在这里，您总能找到一款中意的“宝座”，符合您个人的需求、家庭的布置或办公室的装饰。

Thriving without soil and growing into alien shapes, the rootless and pretty low-maintenance tillandsia—more commonly referred to as "air plants"—requires a throne worthy of their exotic uniqueness. Tired of standard vase or terrarium options, we searched creative ways to showcase the endearing freaks. There's something for every personality and home or office decor here.



### Earth Sea Warrior

厄休拉·马纳夫-皮特（Ursula Manaf-Pitt）以怪配怪。她在布鲁克林的EarthSeaWarrior店铺里收藏着大量已经改头换面的古董，这些古董成了空气凤梨的“搭档”。神奇的独角兽、萤石水晶头骨、如假包换的鲨鱼鄂，不同容器搭配不同品种的铁兰；藏品和上面的一簇铁兰形成鲜明的对比。不过，我们最喜欢的还是如图所示的古老德国无头美人玩偶（171美元）和恐龙玩偶（65美元）。它们实现了惊悚和迷人的完美调和。

### Earth Sea Warrior

Ursula Manaf-Pitt pairs the weird with weird: her Brooklyn-based shop EarthSeaWarrior is a trove of repurposed curios reborn as air plant-holders. Magic unicorns, fluorite crystal skulls, a genuine shark jaw and more house different species of tillandsia; the little touch of greenery on the ephemera makes a striking contrast. Our favorites, however, are the vintage headless German pinup dolls (\$171) and Dinosaur Dood (\$65). They're the perfect balance of creepy and charming.

### The Sill

The Sill凭借新奇又易于照料的产品成功打入纽约各处的公寓，比如长在苔藓球上的蕨类植物。他们用类似的新奇方式带来节日的喜悦，放弃一品红和松树，转而选用四季如一的仙人掌，再配上颜色鲜艳的新生铁兰群，均从今日起在线上出售。后者由The Sill的专职设计师安德鲁·埃德尔（Andrew Erdle）设计，并由新泽西当地一家家族企业生产。简易的钢制底座（单卖17美元，加送铁兰24美元）十分惹眼，弥补了铁兰桀骜不驯的外形，将它轻轻托起，展现其无根的魅力。

### The Sill

The Sill's been doing a good job infiltrating apartments across New York City with their curious yet easy-care offerings, like ferns growing in moss balls. They're bringing holiday cheer from a similarly novel perspective, eschewing poinsettias and pine trees for un-seasonal cacti, plus new air plant stands in punchy colors—all launching today online. The latter has been dreamt up by The Sill's in-house designer Andrew Erdle and made locally by a family-run business in New Jersey. The simple steel base (\$17 each or \$24 with plant) serves as a striking complement to the air plant's untamed form, all the while levitating it and showing off the rootless magic.

\*以上图片由其相应品牌提供。

\* All images courtesy of respective brands





The Best Choice, For The Perfect Outdoor Life...

欧德户外家具  
OUDE  
OUDE-OUTDOOR

广州市阳光户外休闲家具有限公司成立于2004年，是一家专业制造户外家具及休闲用品的生产厂家，是集设计、生产、研发、销售、服务的专业户外家具生产厂家。公司最早在国内市场创立的两大知名品牌：阳光户外家具和欧德户外家具。

现在国内直营店4家分别为广州、北京、成都、昆明，另有100多家不同区域的分销商，同时产品也畅销全球近100多个国家和地区。希望“阳光户外家具”和“欧德户外家具”能够带给每个人实现美好生活的梦想。

SUNNY OUTDOOR FURNITURE CO.,LTD was established in 2004 and located in Guangzhou city, which is a professional manufacturer of kinds of outdoor leisure furnitures, integrating R&D, manufacture, sales and service.

Based on early domestic market, we have created two famous leading brands: SUNNY OUTDOOR FURNITURE and OUDE OUTDOOR FURNITURE.

Now the company owns 4 direct-sale stores which are separately located in Guangzhou, Beijing, Chengdu and Kunming. In addition, we have cooperated with more than 100 distributors in different regions and exported to over 100 countries and regions all over the world.

Sincerely hope our brands of SUNNY OUTDOOR FURNITURE and OUDE OUTDOOR FURNITURE can bring everyone a good desire to make a better life.

广州市阳光户外家具有限公司  
广州市欧德户外家具有限公司  
广州市力朗户外家具有限公司

工厂地址：广东省广州市番禺区沙头街横江村  
第一工业东8-15栋

电话：020-84872251 020-39990486

传真：020-84872291 02084876649

网址：www.sunny-outdoor.com

邮箱：contact@oude-outdoor.com

公众号二维码：



万坚柚木家具厂成立于2005年，是一间专业生产和加工户外柚木系列家具的优质企业，其研发、制造、销售、加工为一体，长期与国内各大型户外家具企业、贸易公司合作，产品远销国内外。

本公司产品全部采用优质缅甸柚木原木制造，包含全柚木系列和户外柚木系列。秉承着以优质为本，客户至上的企业精神以及竭诚为各界服务，共同发展，共创辉煌的企业理念。

Wan Jian teak furniture factory, founded in 2005, is a professional production and processing of outdoor teak furniture series high quality enterprise. It's research and development, manufacture, sale, processing. Our company long-term with domestic large outdoor furniture companies and trade companies, which products sold at home and abroad.

The company products are made of high quality Burma teak logs, contains the full series of teak and outdoor teak series. We uphold the quality for this, the customer is supreme spirit of enterprise, and from all walks of life wholeheartedly services, common development, create brilliance of enterprise concept.



万坚柚木

GOFA 户外家具协会/理事单位

万坚柚木家具厂

地址 Add:  
广东省佛山市顺德区均安镇矾头开发路29号

电话 Tel:  
+86-757-25389983

联系人/陈先生:  
+86-13902836692

邮箱 E-mail:  
1003486058@qq.com





## WEIJUN INDUSTRIAL (OUTDOOR FURNITURE) CO., LTD.

STAINLESS STEEL ALU. TEAK TEXTILENE

Weijun is a professional producer of hardware furniture and leisure furniture, garden furniture, outdoor furniture and so on. The factory is good at producing aluminum, stainless steel leisure chair, table, chaise lounge, bench, sofa and other household furniture.

Good quality, good price is our biggest advantage of the factory.

Taking "Keep developing and providing good products" as managing targets, We have worked hard to improve and innovate new products to meet with markets.

In competitive days, We will go all out to purchase clients and consumers' recognitions with the best quality products and credits.

Welcome to visit the factory, Welcome to negotiate business with us!



Add: NO.11 Factory, Hongmiao Xifang, Tangxi Cun, Hetang Town, Pengjiang District, Jiangmen City, Guangdong Province of China  
Tel: +86 0750-3731368 Fax: +86 0750-3731377 E-mail: jennifer@weijuncollection.com [www.weijunfurniture.com](http://www.weijunfurniture.com)

佛山市南海区九江蒂梵妮藤艺家具厂，是一家专门从事户外家具的设计开发、生产销售的家具体制造企业。公司主要产品包括：沙发系列、餐桌椅系列、吧桌吧椅系列、躺床系列、休闲椅、金属玻璃家具等。

“蒂梵妮”一直以引导时尚把握前沿为己任，在产品开发上有着匠心独到的设计和执着的追求，力求新颖独特舒适，使其产品更具人性化。

我们地处九江，毗邻中国家具材料的重镇---顺德龙江，我们借助该地原材料和人力资源的优势使得我们生产的藤家具在性价比上具有明显的竞争优势

公司始终以“诚信为本、质量第一”为准则，为客户提供更优质的服务，做消费者的心中人。

我们热忱欢迎来自世界各地的朋友们，我们期待着与您长期愉快合作！

Foshan TIVOLI Furniture Rattan Factory is a professional manufacture in rattan furniture. We concentrate on the design, research, development, production and sales of outdoor furniture. Our main products maintain sofa series, dining table & chair series, bar table & chair series, leisure chairs and metal & glass furniture, etc.

"TIVOLI" always grasps the trend of fashion and pursues delicate and unique design in product development. We strives to the combine of being novel, unique and comfortable, which make our products more humanized.

Our factory is located in Jiujiang Town, which is next to Shunde, Foshan, the biggest furniture materials market in China. As one of the excellent China rattan furniture suppliers, we rely on the local materials and the excellent human resources, we have obvious advantage in price and quality competition.

We take "integrity-based, quality first" as our permanent principle and offer great service to customers.

We warmly welcome friends from around the world and we look forward to a long-term pleasant cooperation with you!



户外休闲家具专家

### 佛山市南海区九江镇蒂梵妮家具厂

地址：广东省佛山市南海区九江镇龙高路园北五路七号

(第一人行天桥右侧)

电话：+86-757-81862981

传真：+86-757-81862982

邮箱：tivoli@tivoli-f.com

网址：<http://www.tivoli-f.com>

### 产品图片



### 编织方法



TIVOLI Create high quality life

蒂梵妮缔造优质生活



# Fu#liao福巧

## 东莞市福巧纺织品有限公司

东莞市福巧纺织品有限公司位于广东省的历史名镇,广东四小虎之一的虎门

保利展馆17.3D02

林先生: 13414213330

福巧纺织专业制造生产**特斯林网布.户外专用织带, 扭绳**

主要产品是由高强度涤纶长丝拉伸包复无毒,无异味的环保PVC图层的复合纱线经纬编织而成,经织造和高温定型制造而成的,成品网布表面平整纹理清晰,耐高温,耐用,易清洁,安全和健康网布颜色丰富,色彩亮丽,可以随意裁剪,的特点。同时由于其良好的透气性,抗紫外线以及凉爽的感觉,也广泛应用于户外桌椅,沙滩椅,遮阳窗帘等等。公司秉承:“品质就是生命”的理念,引进先进生产设备,为客户提供优质优良,式新颖的特斯林网布面料。愿与多家客商各界同仁和新老朋友长期友好合作,继往开来,共创辉煌



### 产品技术性能说明书

#### 1:特斯林网布, 织带, 扭绳

系列主要成份是由超高强度PET长丝和PVC组成,一小条PET长丝的拉力就有70多牛的力,这些产品由几十根到一百多根长丝组成,拉力是其它绳子无法比拟的。

2:它们有良好的耐候性,使用寿命长,它能耐高温,抗低寒,性能稳定,易清洗,安全卫生,由于产品中加入了有效的抑菌成分,可有效抑制细菌滋生,是家居与酒店的首选。是普通扭绳不具备的。

3:良好的防水性和抗老化,从而适合了户外日晒雨淋,而尼龙,丙纶织带日晒雨淋将会龟裂或成粉末。

4:良好的防火性能,从而适合了室内家具的求要,尼龙织带需做特殊处理才能防火性能但国内还没有人做得到,而丙纶织带无法达到防火标准。我司PVC扭绳可做到美国GOVMARK认证实验室的IMO的测试标准。



地址:广东省东莞市虎门镇南栅第五工业区南泰路3号



**霆源户外休闲用品有限公司**  
Ting Yuan Outdoor Leisure Products Co.,LTD



扫一扫上面的二维码图案  
关注霆源

霆源戶外休閒用品有限公司,成立於2011年,註冊商標“霆源”品牌,位於廣東省佛山市南海區西樵鎮聯新十二隊上基沙基邊,占地面積6000平方米,公司擁有壹大批致力於戶外遮陽系統研發和生產的專業人士,擁有壹流的生產設備和技術。主要產品有:鋁制木制太陽傘、太陽節能照明燈傘、太陽能多功能沖電帳篷傘、多功能轉向傘、鋁木制大吊傘、多功能遮陽傘、傘座、鐵藝帳篷、木制鋁制帳篷等。產品遠銷歐洲、北美等國家。

“質量第壹、恪守誠信”是我公司的宗旨,“打造壹流產品、熱誠服務”是霆源人堅持不懈的追求和承諾,歡迎您到公司參觀指導、來圖來樣加工,本公司將竭誠為您服務。

Ting yuan outdoor leisure products Co., Ltd, established in 2011; registered trademark "ting yuan" brand; located in Xiqiao Town, Nanhai District, Foshan City, Guangdong Province, linking the new 12 team based on Taipa base side, covers an area of 6000 square meters, the company has a large number of committed to the outdoor sun shading system R & D and production professionals; with first-class production equipment and technology, main products are: aluminum wooden umbrella, solar energy saving lamp umbrella, multifunctional solar impulse electric tent umbrella, multifunctional steering umbrella, aluminum wooden big hanging umbrella, multifunctional sunshade umbrella, umbrella base, iron tents, wooden aluminum tent etc.. Products are exported to Europe, North America and other countries.

“Quality first, good faith” is the tenet of our company, to create first-class products, dedicated service ” is people unremitting pursuit and promise of Ting source, you are welcome to to visit the guidance of the company, plans to sample processing, the company will wholeheartedly at your service.

地址: 佛山市南海區西樵鎮聯新工業園上基邊路口

電話: 0757-81250285 86812578 86801269

傳真: 0757-86812578

郵箱: cntingyuan@126.com

網址: www.gdtingyuan.com

www.chinatingyuan.com

Add: Lianxin industrial,Xiqiao,Nanhai District,Foshan, Guangdong,China

Tel: +86-757-81250285 86812578 86801269

Fax: +86-757-86812578

E-mail: cntingyuan@126.com

Website: www.gdtingyuan.com

www.chinatingyuan.com





## GDOFA will hold the 1st Global Garden Lifestyles Festival in 2016 along with CIFF

### 广东户外家具行业协会携手广州家博会 将举办 2016 年“首届环球花园生活节”

由中国家具博览会、广东省户外家具协会联合举办了一场商业跨界，抱团发展——第 37 届中国国家博会（广州）户外家居展区推介会暨首届环球花园生活节启动仪式于 12 月 11 日在中国陶瓷总部隆重召开。

为满足行业需求，响应企业呼声，广州家博会第一期开始将整个户外家居展区移师保利，使用全部 6 个展厅，扩阔了户外家具产业链的发展需求。其中，户外家居展区三楼更是携手环球花园生活节，创造多维度、互动式户外家居采购商贸平台，共享来自全球 190 多个国家和地区的 19 万具有商业价值的专业观众资源。

此次生活节的总策展人广州绿色之春关鸣先生详细介绍了环球花园生活节的生活态度决定生活方式的核心价值观。本次生活节通过创意、设计、生活、互动、传播等多个环节的相互联动来达到举办展中展的预期效果，为未来家具更具创意、更国际化、更高品质的设计搭建平台，是广州家博会的一大亮点。



The promotion event of the 37<sup>th</sup> China International Furniture Fair (Guangzhou) (CIFF)'s outdoor furnishings exhibition area, along with the launching ceremony of the 1st Global Garden Lifestyles Festival, will be held in the Chinese Ceramics Industry Headquarters (CCIH) in Foshan on December 11 jointly by CIFF and Guangdong Outdoor Furniture Association (GDOFA) with the slogan of "Business Crossover, Joint Development".

To meet the needs of the industry and respond to the calls of enterprises, from the first phase of CIFF (Guangzhou) on, the entire outdoor furnishings exhibition area will be moved to the PWTC Expo with all of its 6 exhibition halls used to extend the development demand of the outdoor furniture industry chain, among which the third floor of the exhibition area along with Global Garden Lifestyles Festival will present a multi-dimensional and interactive outdoor furnishings purchasing platform, where 190,000 professional attendees from over 190 countries and regions around the world will attend and thus generating business values.



Mr. Tom Kwan from Green Spring Media Ltd., chief curator of this festival, gave a detailed introduction of the core value of the Global Garden Lifestyles Festival – attitude towards life determines life style. Through the coordination of creativity, design, life, interaction and propagation, the lifestyles festival will achieve its expected effect of the "exhibitions during the festival" to establish a platform for more creative, more international and more high-quality furniture in the future, which is one of the highlights of CIFF (Guangzhou).



# Meeting and Cooperation, Thinking with Inspiration – Guidance on “Global Garden Lifestyles Festival” from Leaders of ClFF

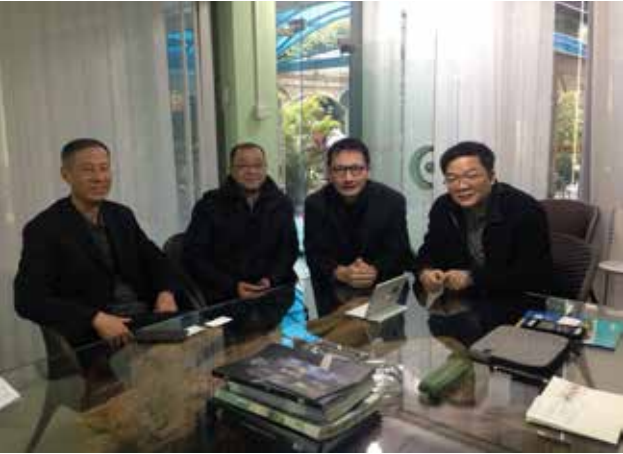
## 相遇与合作，户外出思想——家博会领导指导“环球花园生活节”工作

1月14日上午，中国对外贸易广州展览总公司李德颖总经理及陈旺辉副总经理就2016年首届环球花园生活节活动推广莅临顺德指导。

2016年首届环球花园生活节自发布以来，反响热烈，现已有12家企业参与赞助。本次活动首次将多元的生活方式、设计、产品、环境、活动等融为一体，是借力协会与绿色之春文化传播公司国内外设计师资源联合打造的一个国际品牌。

会议现场明确表示，若有好的活动展示，可以扩大摊位面积，务求令参与企业的产品能够得到最好的呈现。同时，在会议上当机立断，不惜成本，邀请西班牙国宝级设计师戈勃朗先生及其代表作品引入到环球花园生活节当中。李总还提出，希望参与企业能研发更多新的概念产品，使之成为潮流和时尚的发布会。

相信有组委会的大力度支持及重视，本协会齐心协力以及各企业单位的积极配合，环球花园生活节定能将家具展览会推上一个更高的台阶，让企业的产品和品牌在这国际性的活动中推到高点和提升。



In the morning of January 14, Mr. Li Deying and Chen Wanghui, general manger and vice-general manger of China Foreign Trade Guangzhou Exhibition General Cooperation (CFTE) respectively, visited Shunde for the guidance on the promotion of the first Global Garden Lifestyles Festival in 2016.

The first Global Garden Lifestyles Festival has received enthusiastic response and attracted 12 enterprises to sponsor the festival since its announcement. The festival firstly integrates diverse lifestyles, designs, products, environments and it is an international brand jointly built by designers at home and abroad with the help of the association and Green Spring Media Co., Ltd.

During the meeting, it was pointed out that the festival should try its utmost to present the products of participant enterprises and expand the scale of the exhibition if necessary. Meanwhile, it was resolutely determined in the meeting to invite the eminent Spanish designer Mr. Gabarrón and have his works shown in the Global Garden Lifestyles Festival. Mr. Li also hoped that the participant enterprises can develop more creative conceptual products to make the festival a show of trend and fashion.

It is believed that the Global Garden Lifestyles Festival will push the ClFF to a higher level with the strong support and great attention from the organizing committee, the concerted effort of the association, and the active cooperation of enterprises, elevating the products and brands of enterprises to their peak with substantial improvement in this international activity.

# Two Exhibitions, Great Event – Secretary-General Leads a Team to Join HOSFAIR

## 双展联动，盛事来袭，秘书长带队参加广州酒店用品展

2015上海国际酒店用品博览会（广州），于12月15日到17日在广州保利世博展览馆举行，同期举办的还有广州国际酒店用品展，位于琶洲展馆，是目前全球规模最大的酒店用品展览会，2014年该展会的展览面积超过30万平方米，专业观众达50万。两大酒店用品展会齐聚广州，堪称行业盛事。作为以推广宣传广东户外家具品牌为己任的广东户外家具行业协会，自然不会错失这一大好时机。为了及时了解市场最新的资讯，帮助会员企业更好的推广品牌，协会秘书长熊小玲亲自带队参加两大展会，在展会现场派发大量协会宣传资料并和众多酒店业人士沟通，了解到尽管当下市场低迷，但是户外家具的消费需求却是逐年上升，这将为户外家具企业带来广阔的市场空间。



From December 15 to 17, the 2015 Shanghai International Hospitality Equipment and Supply Expo (Guangzhou) was held at Poly World Trade Center Exhibition Hall in Guangzhou, along with the China (Guangdong) International Hospitality Supplies Fair (HOSFAIR) held at Pazhou complex. HOSFAIR is the largest exhibition of hospitality supplies throughout the world with an exhibition area of over 300,000 square meters and 500,000 professional visitors in 2014. It is really a big event with two major exhibitions of hospitality supplies held in Guangzhou. As an association whose responsibilities are promoting and publicizing Guangdong outdoor furniture brands, Guangdong Outdoor Furniture Association (GDOFA) will never miss such a great opportunity. In order to timely acknowledge the latest market information and to help member enterprises to promote their brands in a better way, Ms. Xiong Xiaoling, secretary-general of the association, led a team to join these two exhibitions. The secretary-general passed out many publicity materials of the association and communicated with various insiders of the hospitality industry, learning that though the market is in downtown, the consumption needs for outdoor furniture is increasing year after year, which will bring a big market space for outdoor furniture enterprises.





# Member Enterprises of GDOFA Show up in ClFF (Shanghai)

## 广东省户外家具行业协会组织会员企业亮相上海家博会

2015 年 9 月 8 日，第 36 届中国（上海）国际家具博览会在上海虹桥国家展馆盛大开幕。展览馆设有六大展区及国际家具、设计两个专题馆，规模达 40 万平方米，1471 家海内外参展企业云集上海虹桥，为中国乃至全球家具业献上一场精彩绝伦的行业盛宴！

### 抱团发展，打造广东户外家具品牌效应

协会组织了亚太家私、藤话故事、亚帝、锡山、悍高、博舍、雅藤、美雅鑫、云格、华通花园、金艺林、德锐、长青藤、嘉鹏、东恩、德荣、顺顺达、思艾华、达尔文、名园、中元创新、泓安共 22 家会员企业亮相上海家博会，以高品质的产品在“星星点灯”的展览会上竖起了一面“集团大军”的旗帜，打响广东户外家具品牌，提升产业集群的辐射力。

### 加大宣传，共建广东户外家具协会大家庭

协会一直以来不遗余力地向客户、社会宣传我们的会员企业，方式多种多样。在此次展会中，向海内外人士派发省内企业信息最全的户外家具杂志，内容涵盖所有会员企业的产品信息，让人“一册在手，全部看够”，反响十分好。

### 继往开来，明天会更好！

首秀上海，落地生根，精彩瞬间实在太多太多。意犹未尽，继往开来。明年的中国家博会，三月份广州琶洲，九月份上海虹桥，双城双展形成“春华秋实，好事成双”，将为业界带来更多更好的商贸交流机会。

协会将会不断提升自身的能力，一如既往为各位会员提供优质的服务，让协会越办越好，让广东户外家具的品牌越来越响！

The 36<sup>th</sup> China International Furniture Fair (Shanghai) (ClFF) was opened in the National Exhibition and Convention Center in Hongqiao, Shanghai on September 8, 2015. Six large exhibition areas and two theme pavilions of international furniture and design respectively constitute the entire exhibition center with an area of 400,000 square meters. There were 1,471 domestic and overseas enterprises gathered at Hongqiao in Shanghai, bringing a magnificent furniture event for the Chinese and even global

furniture industry.

Collaborative development for building the brand effect of Guangdong outdoor furniture, Guangdong Outdoor Furniture Association (GDOFA) organized 22 member enterprises, including Nhyatai, EVER GAINING, Artie, Shianco, Higold, BOSCHER, Yateng, Meiyaxin, Yunge, Huatong Garden, Jin Yilin, Derry, IVY, Golden Eagle, Orient Sino, Derong, Shun Cai Da, Sieva, Darwin, Mingyuan, GREENTEK FURNITURE and Hong'an, to make public appearances in ClFF (Shanghai), raising the flag of a united group at the exhibition with premium products to promote Guangdong outdoor furniture brands and improve the radiating capacity of industrial cluster.

Strengthening publicity for co-building the big family of GDOFA, the association has spared no efforts publicizing the member enterprises to clients and the society in various ways. During this exhibition, GDOFA provided people at home and abroad with outdoor furniture magazines with the most complete enterprise information covering information on products by all member enterprises and favorable responses were returned for such action of "one magazine, all information".

Let's forge ahead for a better tomorrow!

The exhibition enjoyed its debut in Shanghai and started to root there with so many splendid moments having been witnessed and more to be expected, and it will never stop forging ahead. The 37th China International Furniture Fair (Shanghai) will be held in Pazhou, Guangzhou in March and Hongqiao, Shanghai in September. With such way of exhibiting for two times in two cities, the paired great event will definitely bring more and better business exchange opportunities for the industry.

GDOFA will keep improving itself and providing excellent services for members as always to make the association better and better and to make Guangdong outdoor furniture brands better-known.







January 30, a face-to-face interaction of minds on the designs of Global Garden Lifestyles Festival (GGLF) was held at SHIANCO organized by Guangdong Outdoor Furniture Association (GDOFA) and Guangzhou Green Spring Media Co., Ltd., chief curator of GGLF, with the attendance of top design teams at home and abroad and the high-end sponsoring enterprises of the activity.

Surrounding by a warm atmosphere, the participants talked freely in the activity and brainstormed from different perspectives and levels such as architecture, design, sellers and customers. Enterprises of end products all expressed that they benefited a lot from this brainstorming mind salon, including many conceptual products and brand-new thoughts and ideas, which offered various interesting ideas for the design of products in the future. In the meantime, the designers also said that the interaction with enterprises will make their conceptual products more suitable to the market.

The mind salon is a brave attempt, where all the people come for

the Global Garden Lifestyles Festival, and there was an in-depth cooperation between original designs and the manufacturing industry for innovation. We believe that commercialized outdoor furniture products and idealized creative designs can sparkle with excellence and splendor in the Global Garden Lifestyles Festival in March.



# The Mind Salon “Meeting and Cooperation” of GGLF is Held Successfully

## 环球花园生活节“相遇与合作”思想沙龙顺利召开

1月30日，广东省户外家具行业协会与环球花园生活节总策展单位广州绿色之春文化传播有限公司组织国内外顶尖设计团队及本次活动高端赞助企业，在锡山家具公司首次就环球花园生活节的设计事宜作面对面的思想碰撞。

整个活动现场气氛热烈，各参会嘉宾均无拘束地自由畅谈，从建筑、设计、商家、顾客等不同的角度，不同的层次，大胆地展开想象。成品企业纷纷表示，本次头脑风暴式的思想沙龙收获丰富，不仅带来了很多概念产品，还将为生产企业带来全新的思维理念，在今后产品设计上有了更有趣的想法。同时，设计师们也表示，跟企业的互动更容易让自己的概念产品“落地”。

本次思想沙龙是一次非常大胆的尝试，大家为环球花园生活节而来，原创设计与制造业深度合作，共同创新。我们相信商品化的户外家具产品一定可以与理想化的创意设计碰撞出绚丽的火花，并在3月环球花园生活节上精彩亮相。



Stainless Steel Outdoor Furniture Professional Manufacturer  
**GREENTEK**  
ZHONGYUAN INNOVATION CO.,LTD



**ZHONGYUAN INNOVATION CO.,LTD** established in 1979, covers an area of 50000m<sup>2</sup>. Possessing strong capacity in hardware manufacturing, design and machining, Zhongyuan opened the furniture division in 2011 and **GREENTEK** stainless steel outdoor furniture.

Our quality control system is operated under the ISO-9001 and meets the international quality standards. **GREENTEK** outdoor furniture always persists in providing high-quality products to all our clients. Therefore, **GREENTEK** outdoor furniture earns a good reputation and exported to Europe and America, Australia, Mid-east, Southeast Asia, etc.

广东中元创新科技有限公司建立于1979年, 占地面积50000m<sup>2</sup>。因拥有超强的五金制造能力、设计能力、机械加工能力, 于2011年创立中元户外家具事业部和“**GREENTEK**”不锈钢户外家具品牌。

我们的产品质量在ISO-9001国际质量保证体系下运行, 一直坚持为客户提供高质量的产品, 产品远销欧洲、美洲、澳洲、中东、东南亚等地, 并获得良好的信誉。

**Welcome to contact us and ask for our catalogues.**



Add: No.3 science park Jiujiang Town, Nanhai, Foshan City, GD, China.  
Tel: 86-757-8650 7380 /86-757-8650 7381  
Fax: 86-757-8656 9277 E-mail: sales03@greentek-furniture.com  
Website: www.greentek-furniture.com



# A Visit to the American High Point Market

## 美国高点展之行



10月15-22日，广东省户外家具行业协会秘书长熊小玲与10家会员企业代表一行15人组成考察团，赴美国参观全球最大规模和最负盛名的高点家具展，同时还深度走访了纽约、芝加哥、夏洛特几大城市中主要的大型家具卖场，见识了更多不同国家的家具元素和设计风格。

协会秘书长熊小玲积极连线美国北卡洲华人商会会长杨华东，考察团受到了杨会长的热情接待，不但深度体会了一把美国的生活，而且为今后各会员企业加强与美国商会交流、开拓国际视野搭建了沟通的桥梁。

美国之行，收获颇丰，无论是让人印象深刻的户外家具风格元素、艺术设计，潜力巨大的户外家具市场，还是在美国各大城市当中的所见所闻都让考察团感慨受益匪浅，不枉此行，纷纷表示希望协会今后多组织这类的海外家具市场考察团。

From October 15 to 22, a 15-member delegation comprised by Xiong Xiaoling, secretary-general of Guangdong Outdoor Furniture Association (GDOFA) and representatives from 10 member enterprises paid a visit to the most well-known High Point Market in the United States, the largest furniture expo around the world. They also had in-depth visits to the major furniture markets in large cities such as New York, Chicago and Charlotte to know more about furniture elements and design styles from different countries.

After Ms. Xiong Xiaoling's active contact with Yang Huadong, chairman of North Carolina Chinese Business Association, the delegation was warmly received by the chairman. Not only did they have a nice experience of the American life, but a bridge for communication was built up between the member enterprises and the American Chinese Business Association to strengthen their communication and enlarge the member enterprises' international vision.

The delegation benefits a lot from this rewarding and worthwhile trip to America from the impressive stylistic elements and artistic designs of outdoor furniture, as well as the potential outdoor furniture market to what they saw and heard in the large cities of the United States. They all express their hope that the association will organize such delegations to visit overseas furniture markets in the future.

# Meeting with Political and Commercial Delegation from Carolinas

## 会见南北卡政商代表

11月8日，美国北卡罗莱纳州政商高级代表团到访东莞名家居世博园。广东省户外家具行业协会会长梁宇鹏、秘书长熊小玲、常务副会长朱亚东等一行10人作为协会代表陪同接待，一起参观了名家居世博园和天润国际木业，双方就广东户外家具行业动态、品牌发展、市场前景等方面进行了友好地交流，这是继户外家具协会美国观展团拜访华人商会后，再度向海外输出广东户外家具品牌的一次良机。



On November 8, a high-level political and commercial delegation from North Carolina, USA paid a visit to the Famous Furnishings Expo Park in Dongguan. Eight representatives of Guangdong Outdoor Furniture Association (GDOFA) including the chairman Liang Yupeng, the secretary-general Xiong Xiaoling and the standing director Zhu Yadong received and escorted the delegation and accompanied them to visit the Famous Furnishings Expo Park and Tianrun International Co., Ltd. The two parties conducted friendly communication on the industry trends, brand development and market prospect of Guangdong outdoor furniture, which is another good opportunity to introduce Guangdong outdoor furniture brands to foreign guests after the GDOFA's visit to the American Chinese Business Association.





# GDOFA holds Anti-counterfeiting Alliance Conference and Vice-chairman's Semi-annual Conference

## 广东省户外家具行业协会召开了打假联盟会议暨副会长半年度会议

10月28日下午，广东省户外家具行业协会秘书处在广东海顺新材料科技有限公司会议室召开了打假联盟会议暨副会长半年度会议，会长梁宇鹏、常务副会长朱亚东等17人参加了会议，主要讨论成立打假联盟小组相关事宜，以及听取了协会秘书处的工作汇报，会议由熊小玲秘书长主持。

鉴于近年来抄袭仿冒现象在行业里日渐猖獗，秘书长提出成立打假联盟小组势在必行，推选打假联盟主席及执行人，制定了打假联盟章程，希望与会人员提供可行性建议。会长梁宇鹏指出，成立打假联盟的关键在于操作性要强，让所有企业引起高度重视，进一步抵制企业恶性仿冒行为，建议由协会发起组成3-5人的打假联盟小组，作为日后打假事宜的执行人员。

参会代表认真听取了秘书处的工作汇报，积极主动发言，对协会的各项工

On the afternoon of October 28, the secretariat of Guangdong Outdoor Furniture Association (GDOFA) held an anti-counterfeiting alliance conference and vice-chairman's semi-annual conference in the meeting room of Guangdong Highsun New Material Technology Co., Ltd. Hosted by Ms. Xiong Xiaoling, secretary-general of the association, the conference was attended by 17 people including the chairman Liang Yupeng and the standing vice-chairman Zhu Yadong to discuss about the building up of an anti-counterfeiting alliance and to hear a report made by the secretariat.

Considering the fact that plagiarism and counterfeiting has been rampant in recent years, the secretary-general proposed that it is imperative to build up an anti-counterfeiting alliance, elect a chairman and an executor for the alliance, and formulate the regulations of the alliance with the hope that attendees can provide feasible suggestions. Chairman Liang pointed out that the key to establish this alliance lies in the effective drawing of much attention from all enterprises to further restrain their vicious counterfeiting behaviors. He suggested that 3 to 5 members from the association to comprise an anti-counterfeiting group and to be the operational staff of anti-counterfeiting issues in the future.

The attendees attentively listened the report made by the secretariat, actively shared their ideas, and expressed their recognition and thanks to the work done by the association. In the meantime, they also exchanged their thoughts on the current situation and development tendency of related industries, and proposed suggestions for the development of the association and how to help member enterprises to grow bigger and stronger in a harmonious meeting atmosphere. will organize such delegations to visit overseas furniture markets in the future.



# Hand in Hand, Heart by Heart – GDOFA visits Qingyuan to Donate for Education

## 大手牵小手，爱心伴同行——记广东省户外家具行业协会赴清远捐资助学活动

10月10日，由ARTIE LP2发起的“大手牵小手，爱心伴同行”捐资助学活动在清远举行，广东省户外家具协会秘书长熊小玲作为代表，带着会员企业的暖暖爱心，与亚帝公司一行50多人，来到清远大路小学开展活动。

本次活动得到了外界及广东省家协会会员的大力支持，并由家协秘书长作为代表向大路小学捐赠了课桌、电脑、文具等大量物资及一万元爱心基金。期间，我们一行人还与孩子们亲切交流，一同游戏、唱歌与作画，共同谱出最美乐章，画出绚丽线条，播种爱的希望。

物资和资金有限，但爱心无价，协会今后会携手社会热心团体开展形式多样的爱心活动，让爱深情传递。

On October 10, the donation for education with the slogan of “Hand in Hand, Heart by Heart” sponsored by ARTIE LP2 was held in Qingyuan. More than 50 people came to the Dalu Primary School in Qingyuan for the event, including Ms. Xiong Xiaoling, secretary-general of Guangdong Outdoor Furniture Association (GDOFA), who represented the member enterprises to bring their love along with representatives from Artie.

This event has received great support from the public and members of GDOFA. On behalf of the association, Ms. Xiong donated many supplies such as desks, computers, stationery and 10,000 yuan of love fund. During their stay, they talked to children, played games, sang beautiful songs and drew nice pictures together.

Though the supplies and fund is limited, the love is unlimited. In the future, the association will join hands with enthusiastic social groups to hold events in different forms to spread love and care to those in need.







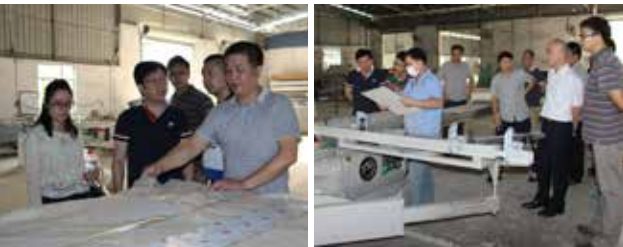
# GDOFA Organized Members to Visit Guangzhou Fuyuehua Ornament Material Co., Ltd.

## 户外家具协会组织会员到广州市富栎华饰材有限公司参观考察

为增进会员间的互相交流，促进会员间相互学习，10月30日下午，在户外家具协会秘书长熊小玲的带领下，6家会员企业赴广州市富栎华饰材有限公司进行了参观考察。广州市富栎华饰材有限公司座落于广东省广州市白云区太和镇富栎华工业区。拥有最先进的建材加工设备，年加工各类板材可达100万平方米。是目前中国最具规模的抗倍特以及理化板的加工公司。

会员企业们首先参观了富栎华公司，对富栎华公司的规模和加工类型有了初步的了解。随后，富栎华公司奚元松总经理对新型材质进行了专题介绍，并带领会员们参观了生产车间、加工现场、样板房等。现场观摩产品的生产工序，了解生产的流程和技术水平。

此次会员企业参观活动的举办，不仅搭建了一个良好的学习平台，加强了会员企业对户外行业新型材料的了解和认识，更增进了会员之间的沟通与交流，同时也对协会和会员之间起到了积极的促进作用。



To promote the mutual communication among members and encourage them to learn from each other, 6 member enterprises paid a visit to Guangzhou Fuyuehua Ornament Material Co., Ltd. on the after of October 30 under the guidance of Xiong Xiaoling, secretary-general of Guangdong Outdoor Furniture Association. The company is located in Fuyuehua Industrial Park in Taihe Town, Baiyun District, Guangzhou, Guangdong Province. As one of the largest processing companies of compact laminate and chemical-resistant laminate, Fuyuehua owns the most advanced processing equipment for building materials with its annual processed sheet materials of 1 million square meters.

The member enterprises firstly visited Fuyuehua to have a basic understanding of its scale and processing types. After that, Xi Yuansong, general manager of the company, gave an introduction to new-type materials and guided the members to tour the production plant, processing site and model room to watch the production process of products and know about the production process and technical level.

This visit not only established an excellent learning platform and strengthened the member enterprises' knowledge and understanding of new-type materials in the outdoor industry, but promoted the communication between members, realizing a positive effect on the association and the members.



# GDOFA Is Awarded the Outstanding Business Association of 2015

## 广东省户外家具行业协会荣获 2015 年度优秀商协会

2016年1月25日，由广东省行业协会联合会主办的合纵联横·跨界共赢年度盛典于广州南沙大酒店隆重举行。广东省户外家具行业协会熊秘书长应邀出席，见证行业商协会里程碑盛事。

为实现树立标杆，在省委统战部、省民政厅等政府部门的大力支持下，本次年度盛典由省行协联牵头成立评选组委会，坚持“公开、公平、公正”的原则，在全省5000多家行业商协会中评选45家广东省优秀商协会。

广东省户外家具行业协会荣获2015年度广东省优秀商协会，广东省行业协会龚少林会长向受表彰协会授牌。

2015年，广东省户外家具行业协会积极搭建户外家具行业交流平台，不仅带领会员企业抱团参加广州、成都、东莞及上海的国际家具博览会，还走出国门，去了欧美国家等近十余个城市，向海外推介广东户外家具品牌，得到了各会员企业的认可和支持。同时，协会还定期策划高端行业主题论坛，为会员企业的信息交流、业务合作牵线搭桥。一直以来，协会还热心社会公益，携手热心团体开展形式多样的爱老、助学、赈灾等慈善活动，积极履行社会责任。

The annual festival with the theme of "uniting all powers for crossover winning" sponsored by Guangdong Province Federation of Industry Association was held in Nansha Grand Hotel in Guangzhou on January 25, 2016. Ms. Xiong Xiaoling, secretary-general of Guangdong Outdoor Furniture Association (GDOFA), was invited to attend and witness this milestone event.

The selection committee, founded under the leadership of Guangdong Province Federation of Industry Association with the substantial support from multiple governmental agencies including the United Front Work Department of Guangdong Provincial Committee of CPC and Department of Civil Affairs of Guangdong Province, selected 45 outstanding industrial business associations from over 5,000 industrial business associations in Guangdong under the principle of "openness, fairness and impartiality" for the purpose of establishing a benchmark.

GDOFA was awarded the 2015 Outstanding Business Association of Guangdong Province with the medal conferred by Gong Shaolin, president of Guangdong Province Federation of Industry Association. In 2015, GDOFA actively established exchange platforms for the outdoor furniture industry, organized member enterprises to attend international furniture fairs in Guangzhou, Chengdu, Dongguan and Shanghai, and traveled to over 10 cities in European and American countries to promote outdoor furniture brands of Guangdong Province to the world, receiving strong recognition and support from various member enterprises. Meanwhile, GDOFA planned high-end industrial theme forums at regular intervals to set up bridges for the information exchange and business cooperation of member enterprises. The association has always been enthusiastic about public welfare and organized various forms of charity events with enthusiastic organizations such as caring for the elderly, education assistance and disaster relief to actively fulfill social responsibilities.





微信扫一扫

# 户森家具

## 专注户外家具生产15载!

FOCUS ON OUTDOOR FURNITURE PRODUCTION 15 YEARS

公司网站: <http://www.fshusen.com/>



## 盈润达装饰塑料制品有限公司

盈润达装饰塑料制品有限公司位于广东省佛山市顺德区,是专业生产以塑代木产品厂家,年产量可达2000吨,产品形成五大系列:户外家具板材.浴室装饰板材.室内外装饰线材.户外凉亭.地板.围栏等代木的板材.节约能源,保护森林,保护环境,是权人类的共同目标!

Tatsu Yingrun Decorative Plastic products Co., Ltd. is located in Shunde District, Foshan City, Guangdong Province, is specializing in the production of plastic instead of wood products manufacturers, with an annual output of up to 2000 tons, products formed five series: outdoor furniture board, Board bathroom decoration, Indoor and outdoor decorative wire, Outdoor pavilion, The floor, Fencing wood sheet. Save energy, protect forest, protect environment, it is the common goal of human right!

## 产品展示



型号:0923



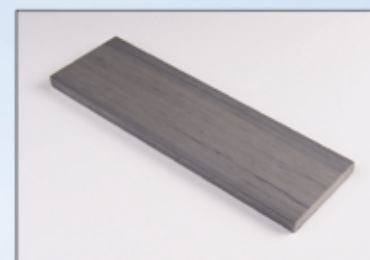
型号:A30200



型号:A30211



型号:A30143



型号:A30136



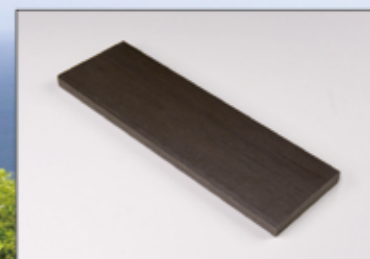
型号:A30202



型号:A30142



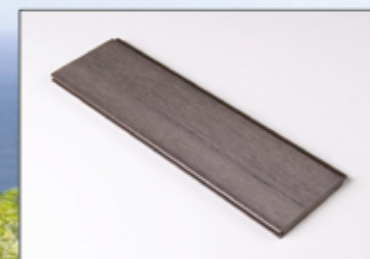
型号:A30145



型号:A30149



型号:A30150



型号:A30215



型号:A30216



型号:A30227



型号:YR03



型号:YR04



型号:A30225



型号:YR09



型号:YR16



黑色压纹



白色压纹

地址Add: 广东省佛山市顺德区北滘镇槎涌工业区

联系人: 谭经理 13923238389

电话Tel: +86-757-26396166 传真Fax: +86-757-26396165 邮箱Web7071288@qq.com



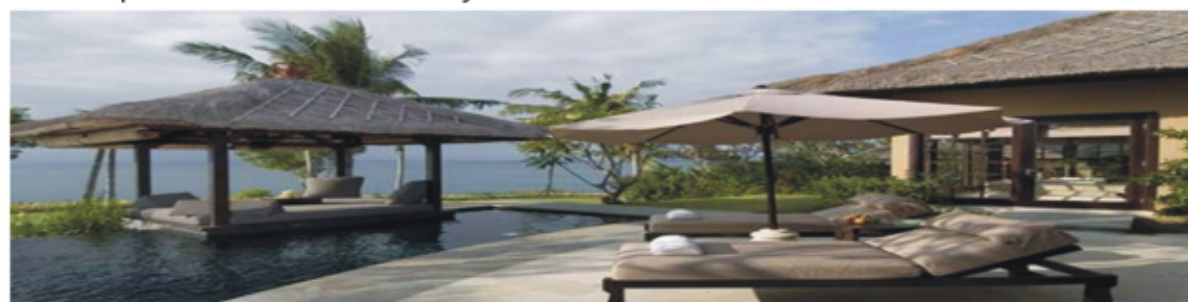


Yude Furniture Manufacture Co., Ltd. is located in Chachong Industrial Estate, Sanle Road, Beijiao, Shunde Guangdong, China. It was established in 2000 and owns over 30,000 square meters of factory building. It has obtained ISO9001 and 2000 international certification.



Our Company is specialized in all the outdoor and landscape equipment and accessories. Its range from the outdoor furniture, sittings, lightings, insect killers, sculpture fountains, instant erect tent and all kinds of barbecue stoves. It is made from hard wood, soft wood, aluminum, steel tube, cast iron, tubular metal, resin garden furniture in new and traditional designs and many other accessories representing the best in tradition design and innovation in outdoor and garden furniture.

Yude Furniture Manufacture Co., Ltd. is your assurance of quality of product and service. The product of our company has extended the market to Europe, America and other part of the world. We sincerely invite you to cooperate with us at anytime.



公司名称：佛山市顺德区裕德实业有限公司

Company name Yude Furniture Manufacture Co.,

公司地址：广东省佛山市顺德区北滘镇槎涌工业二区

Address: Chachong Industrial Estate, Sanle Road, Beijiao, Shunde Guangdong, China.

联系电话：15918010118

网站：[www.yude.com.cn](http://www.yude.com.cn)

邮箱：Winnie@yude.com.cn

Mobile：15918010118

Website [www.yude.com.cn](http://www.yude.com.cn)

E-mail：Winnie@yude.com.cn



Foshan Perfect outdoor furniture Co., Ltd



**Our factory established in 2006, located at Shunde where the famous town of furniture manufacturing in China.**

**At Perfect, we design and make modern outdoor furniture offering best solutions to living. We offer a variety of home furnishings for indoor and outdoor use. All of our furniture is 100% hand-woven by skilled craftsmen and made of top quality material. We are well experienced in cooperation with wholesaler, importer, trading company, sourcing company and on tractor. We promise good quality products in competitive prices. At Perfect furniture, you may enjoy short lead time, on-time shipping and customer oriented service. We look forward to cooperation with you in creating a new experience outdoor living.**



佛山市顺德区欧柏尔户外用品有限公司

Add: Dasha Weil Industrial Zone, Bei Jiao, Shunde, Foshan, Guangdong, China

Email: [info@PF899.com](mailto:info@PF899.com) Tel/Whats App/Weixin: 18666560988

Rattan sofa | dining set | rattan chair | bar chair & table | sunlounger 户外家具, 藤家具, 铸铝家具





## 华高斯(华顺昌)户外休闲家具有限公司:

位于家具之乡佛山顺德，专注户外家具逾13年历史，产品涵盖藤艺，塑胶木，铁网等市场主流系列；华高斯以“用心做产品、一心为客户”的经营理念，我们愿与国内外朋友互惠互利

**共創雙贏，共建和諧！**

Racos Outdoor Leisure Furniture Co., Limited was established at 2003, which primarily specialized at PE Rattan, Alu, Steel, Spraystone Glass, PS wood, and Wrought iron (Mesh Steel) series. We commit to offering enthusiasm to build successful strategic alliance/cooperation with you. Let's embrace the bright future together, based upon our professional attitude, innovative products and sincere service!

电话 (Tel): + 86 0757 23600937 , +86 13823442843

传真 (Tel): + 86 0757 23602327

邮箱 (Email): fshuashunchang@163.com

地址 (ADD): 广东省佛山市顺德区北滘镇居委会工业区兴隆10路1号

WEB: <http://racos.gmc.globalmarket.com/>



# 中国陶瓷总部

CHINA CERAMICS INDUSTRY HEADQUARTERS

陶瓷卫浴 | 高端品牌 | 总部聚集

Ceramic & Bathroom | Top Brands | Headquarters Gathering

全球采购中心 · 名牌核心基地

Global Purchasing Center · Famous Core Base

荟萃300家高端陶瓷卫浴品牌

招商热线: +86-757-82780618 / 服务热线: +86-757-82526666 / 传真: +86-757-82525996

网址: [www.ccih.cn](http://www.ccih.cn) / 地址: 佛山市禅城区季华西路68号中国陶瓷总部







实用·耐用·舒适是我们产品的特色。

让产品为经销商创造更大商业价值是我们一直追求的目标！

诚招全国空白区域经销商代理



广东顺德金艺林家具实业有限公司

地址：广东省佛山市顺德区北滘镇碧江工业区珠江大道 18 号之七  
电话：86-757-2360-9622 2999-8271

传真：86-757-2633 2077  
邮箱：jylpan@fsjyl.com

[www.fsjyl.com](http://www.fsjyl.com)

五彩缤纷的生活世界，来自至高的品质境界  
Colorful Life World From The Most High Quality State



户外 / 座垫布  
FASHION FABRIC



思艾华纺织品有限公司 地址：广东佛山市顺德区龙江镇龙城国际皮布交易中心 A1-121  
SIEVA FABRIC CO., LTD. 电话：0757-2922 1008 传真：0757-2922 1007 邮箱：s\_eva@sina.cn

TOPTECK是龙美达石材集团旗下专注于休闲家具台面产品研发生产的品牌，创始成立于2002年，总部位于佛山顺德。集团是一家专业研发生产和销售天然石材产品的大型企业，致力于为高端酒店、会所、豪宅等工程提供环保精品精工石材解决方案。

TOPTECK is the brand of TopTeck Stone Group specialized in the R&D and production of tabletop of leisure furniture, established in 2002 with the headquarter locating at Shunde of Foshan, the group is a big enterprise in the R&D, production and sale of natural stone products, and is devoted to providing eco-friendly and fine stone solutions for top hotels, clubs and deluxe building.

**TOPTECK® 龙美达石材**  
— since 2002 —

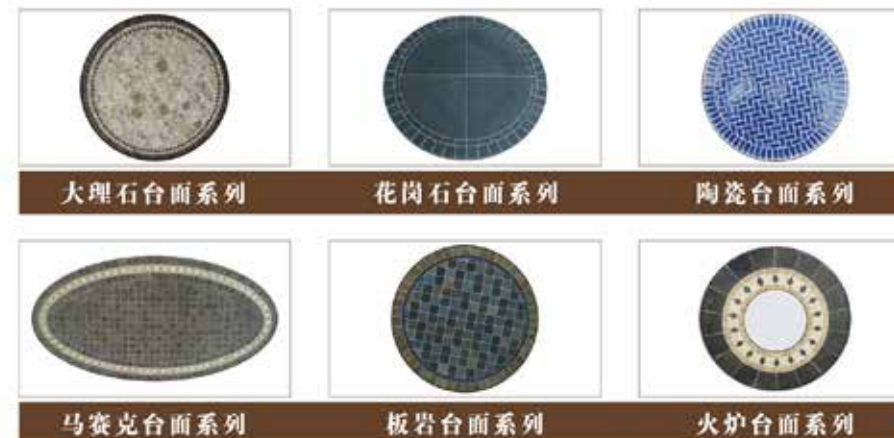
休 闲 家 具 台 面 专 家



电话 Tel : +86-757-23304398  
邮箱 E-mail : andy@topteck.cn  
网址 Web : www.lmdstone.com



更多产品信息请咨询我们.....



**“Tulips”** Sun Bed  
“郁金香”日光床



**Lailisi Furniture**

佛山市顺德区莱力斯家具有限公司

Add: 9th ZhenXing Road, Mailang Village, Longjiang Town,  
Shunde Area, Foshan City, Guangdong

地址：广东省佛山市顺德区龙江镇麦朗村西沙工业区振兴路9号

Tel: +86-757-23605638 QQ/微信: 18029264990

Email: ivigor@lailisifurniture.cn

[www.lailisifurniture.cn](http://www.lailisifurniture.cn) [fslailisi.1688.com](http://fslailisi.1688.com) [www.lailisifurniturefs.com](http://www.lailisifurniturefs.com)





www.teckguan.com/majulah 

来自**可茵山**黑火山可可，口味奇佳！  
**Superb taste!**  
Cocoa origins from fertile volcanic soil.



MAJULAH KOKO TAWAU (016173-k)  
迈进可可厂有限公司 (016173-k)  
US FDA Registration No: 12096326704

Teck Guan Regency, 318 Jalan St. Patrick,  
91000 Tawau, Sabah, Malaysia.  
Tel: +60-88-439955 (Kota Kinabalu)  
Tel: +60-89-779955 (Tawau)  
Tel: +60-89-669955 (Sandakan)  
Tel: +60-89-889955 (Lahad Datu)  
Email: hoko@teckguan.com  
Jane Liu : +0086 13808 818 449 (Guangzhou)

可茵山，斗湖，沙巴。  
Quoin Hill, Tawau, Sabah.



Zhejiang Boke Industry & Trade Co., Ltd., the original name was Wuyi Hushan Jingyu Mold Factory, after 5 years' carve out, it has many good quality products' production line, cast aluminum outdoor furniture, mailbox, dustbin, fence and so on. It invited engineers and researchers that had ten years' experience, it has a coordinated process that including designing, carving, tooling, producing and packing. The products are classical, they are welcome at cast aluminum outdoor furniture market.

## ZHEJIANG BOKE INDUSTRY AND TRADE CO., LTD

Address: No. 7 Jinlong Industrial Area Gangtuo Wuyi City  
http://mdg-outdoorfurniture.en.alibaba.com/  
MP: +086 138 5890 0813  
WEBSITE: www.zjbokegm.com  
E-mail: xjhkk@126.com

  
藤话故事® Furniture & Decorations

叙述不一样的家居故事

欢迎莅临  
第37届中国广州国际家具博览会  
2016.3.18 — 3.21  
广州家博会D区(保利世贸博览馆)  
展位号: 17.1C05



东莞市藤缘工艺品有限公司 (藤话故事家具有限公司)  
Manufacturer: EVER GAINING FURNITURE FACTORY LIMITED  
Add: Building A, Wanji Industrial Park, Shipai Town, Dongguan, Guangdong, China  
Tel: (0769) 8137 2778 Fax: (0769) 8137 7318  
E-mail: rattanstory@163.com evergaining@163.com  
Website: http://www.evergaining.cn

WWW.EVERGAINING.CN